



**Troisième correction du Rhône**  
SÉCURITÉ POUR LE FUTUR

*Les améliorations foncières intégrales comme outils de mise en œuvre de projets territoriaux*

*La 3<sup>ème</sup> correction du Rhône*

*C.-A. Vuillerat*

*CH-AGRAM contribution to IRL 13.09.07*

*Swiss National Commission on agro systems and land improvement*



ch-agram

### Historique

2000




ch-agram

### Historique

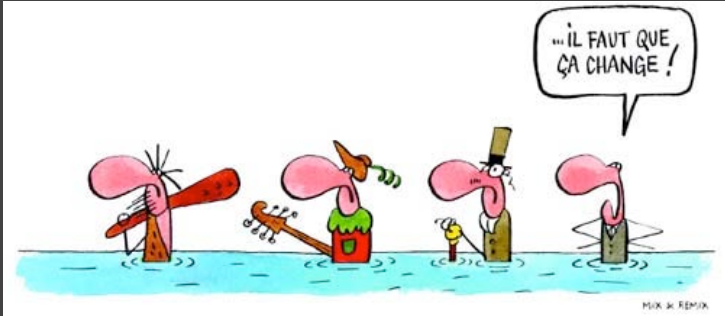
**1990 : Evaluation des risques**  
140 km<sup>2</sup> inondables  
CHF 10 milliards de dégâts potentiels

**2000 : Crue (temps de retour 100 ans)**  
ruptures de digues  
10 km<sup>2</sup> inondés  
CHF 300 millions de dégâts



ch-agram

### 3<sup>ème</sup> correction du Rhône



ch-agram

### 3<sup>ème</sup> correction du Rhône

Prise en compte des enjeux et participation à trois niveaux

**1. Au niveau de toute la plaine**

Plan sectoriel Rhône  
Scénarios pour une agriculture valaisanne durable  
Groupe d'accompagnement agricole  
Concept directeur de réseau écologique cantonal

**2. Au niveau régional**

Concept de développement de la plaine  
Groupes de travail

**3. Au niveau local**

**Améliorations foncières intégrales**  
Projets urbains  
Interventions ponctuelles



ch-agram

### Principes de R3




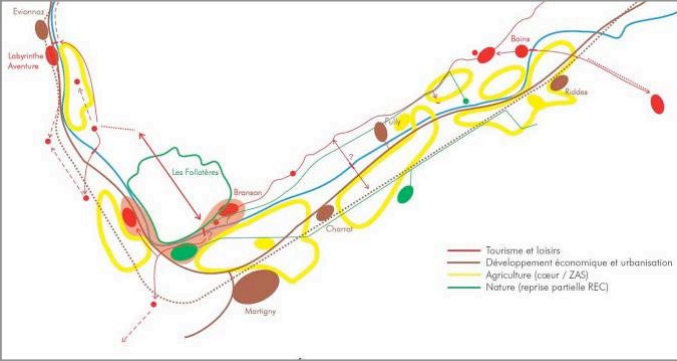
ch-agram

### Au niveau régional

**C Concept**

- Esquisse de carte au 50'000
- Tourisme et loisir
- Développement communes
- Réseau écologique
- Scénario agricoles





ch-agram

### Concept régional de développement de la plaine






ch-agram

### Au niveau local

**Amélioration foncière intégrale** lorsque:

- Besoin et volonté agricole
- Importante emprise R3
- Opportunité pour plusieurs projets simultanés
- Mise en œuvre du concept de développement régional

**AFI =** intégration en douceur du projet R3,  
mesures de compensation pour l'agriculture,  
recherche de synergies



ch-agram

### Au niveau local

**Amélioration foncière intégrale :**


**ETUDE DE FAISABILITE**

**AVANT-PROJET**

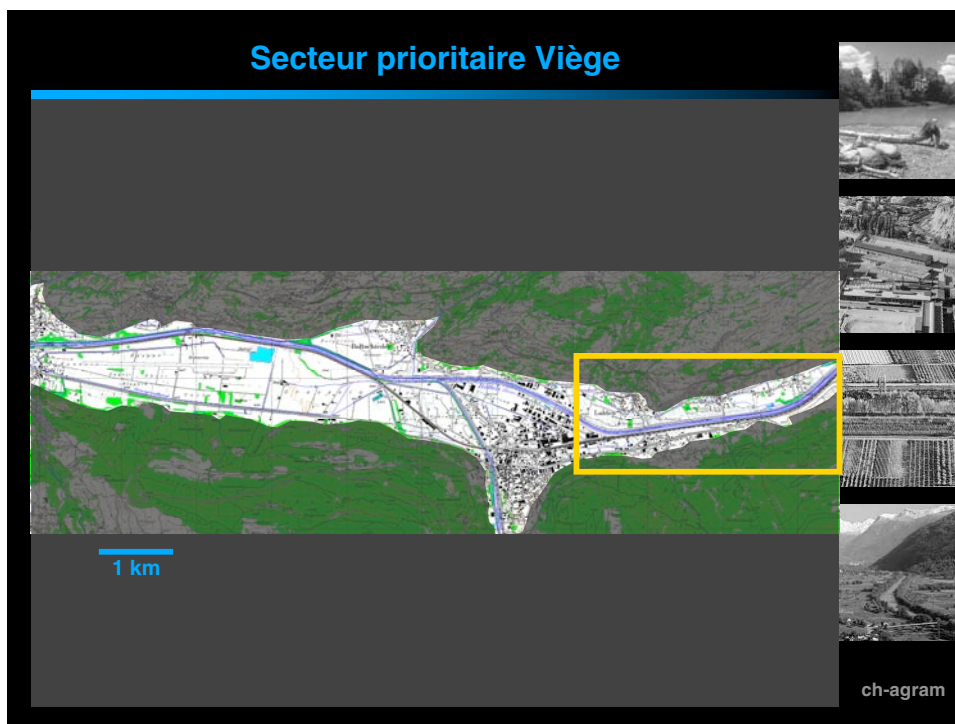
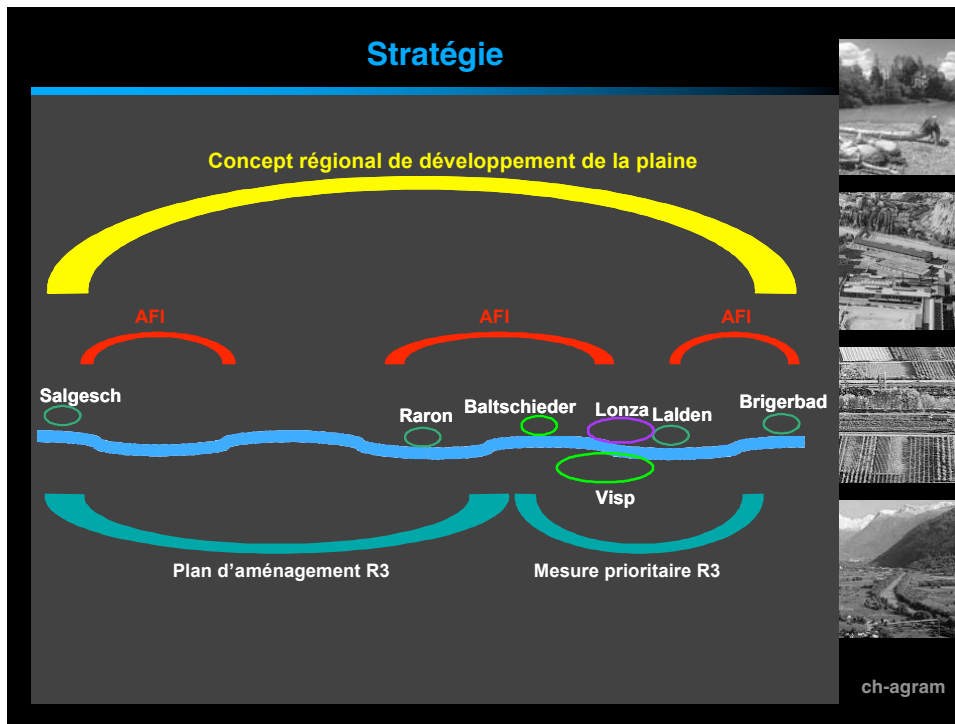
- Diagnostic
- Objectifs et priorités
- Concept général et périmètre
- Concepts sectoriels et mesures
- Analyse d'utilité
- Répartition des coûts

**MISE EN CONSULTATION PUBLIQUE**

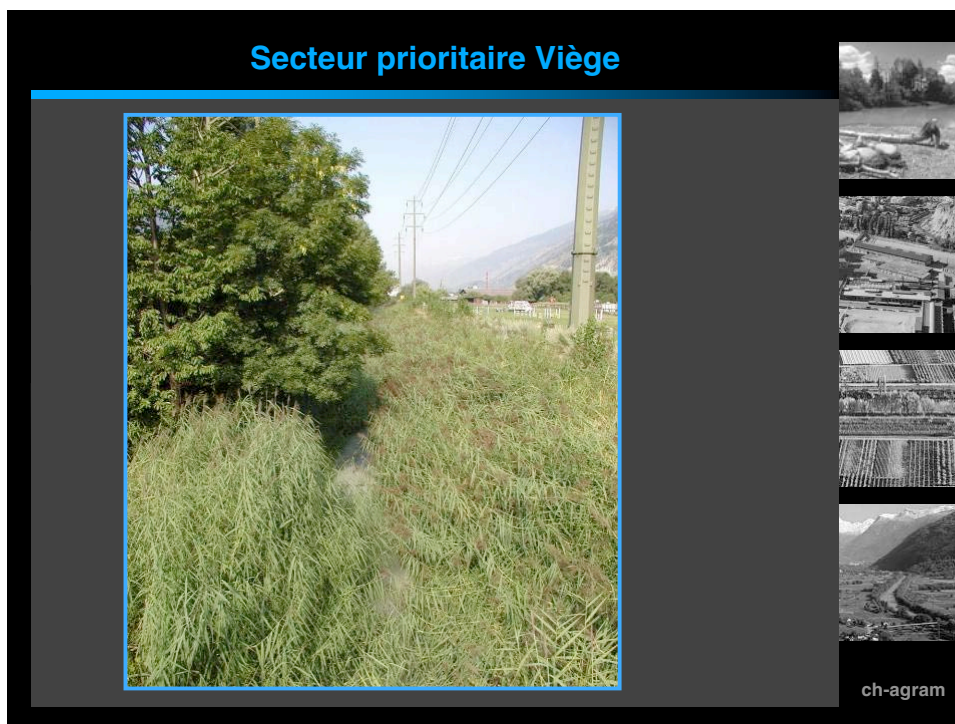
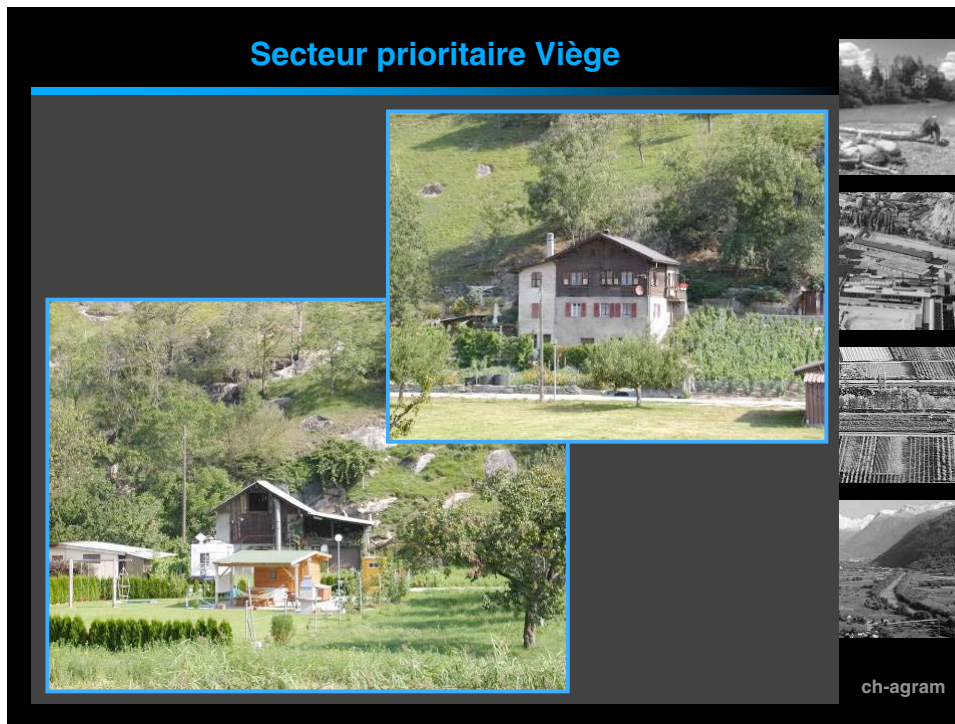
**PROJET GENERAL**



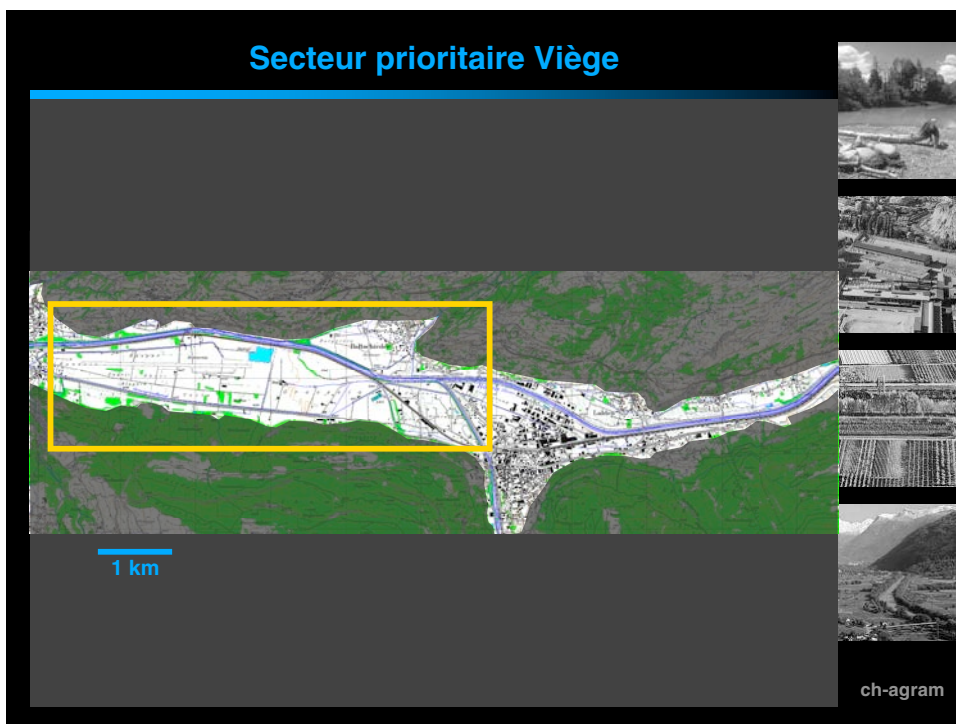
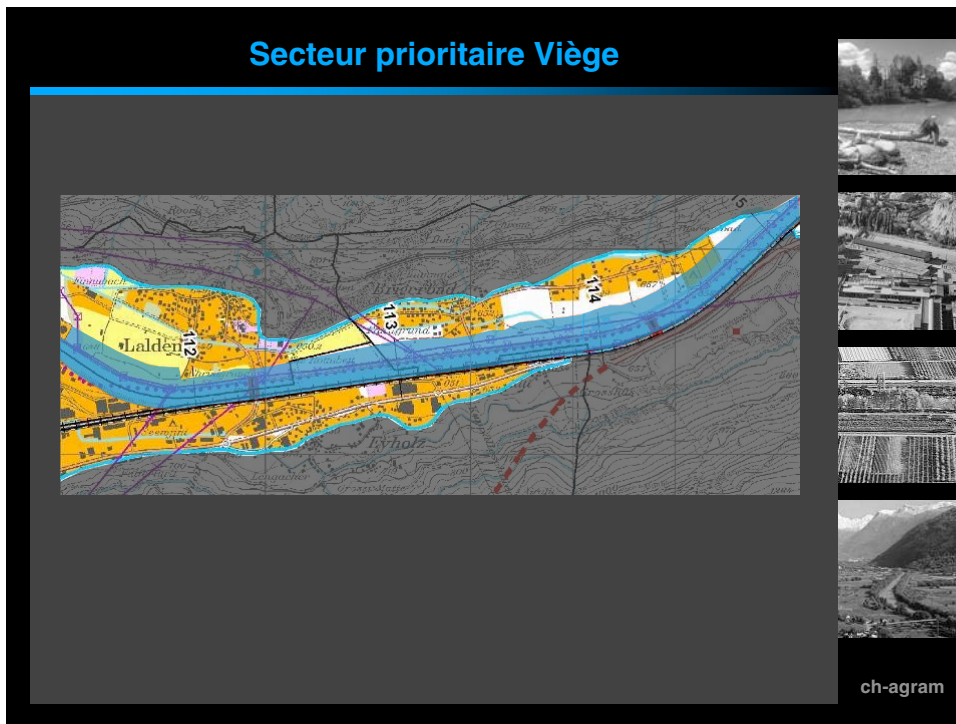
ch-agram



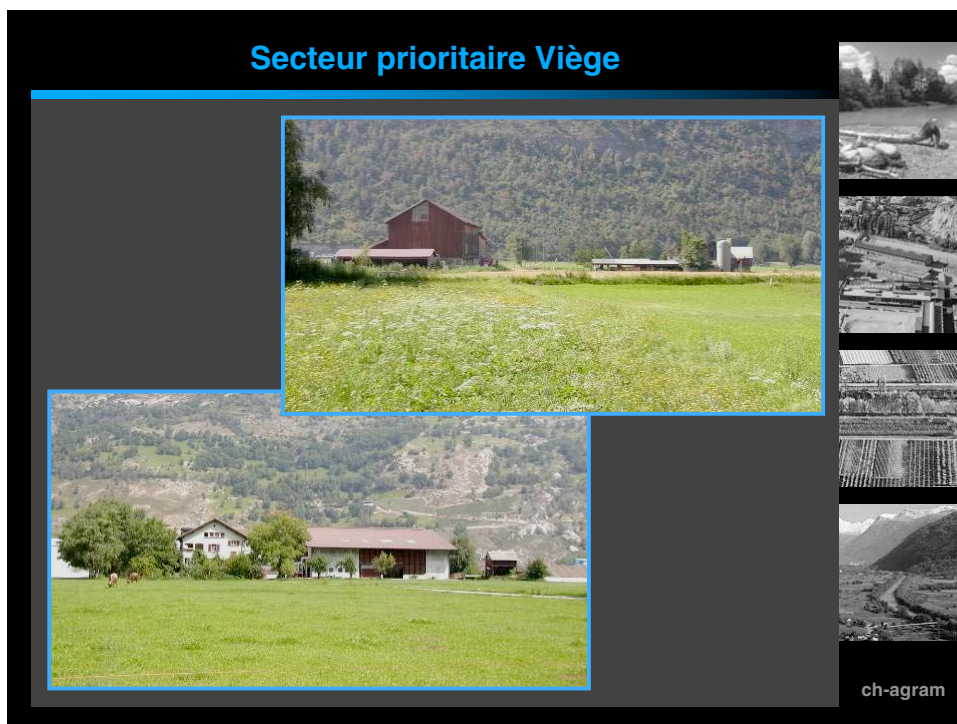
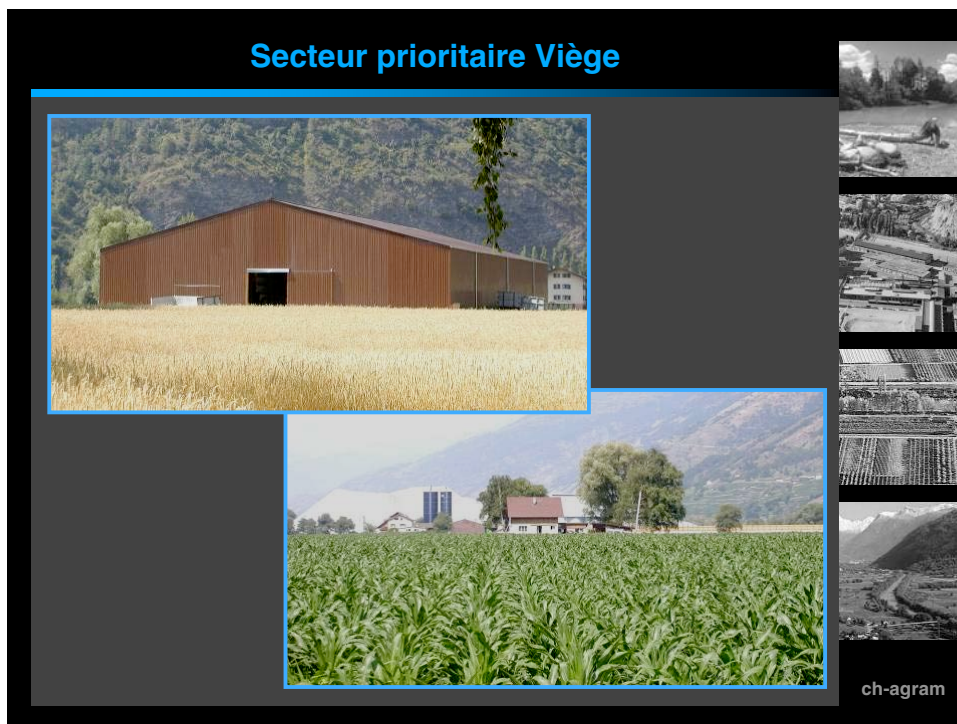


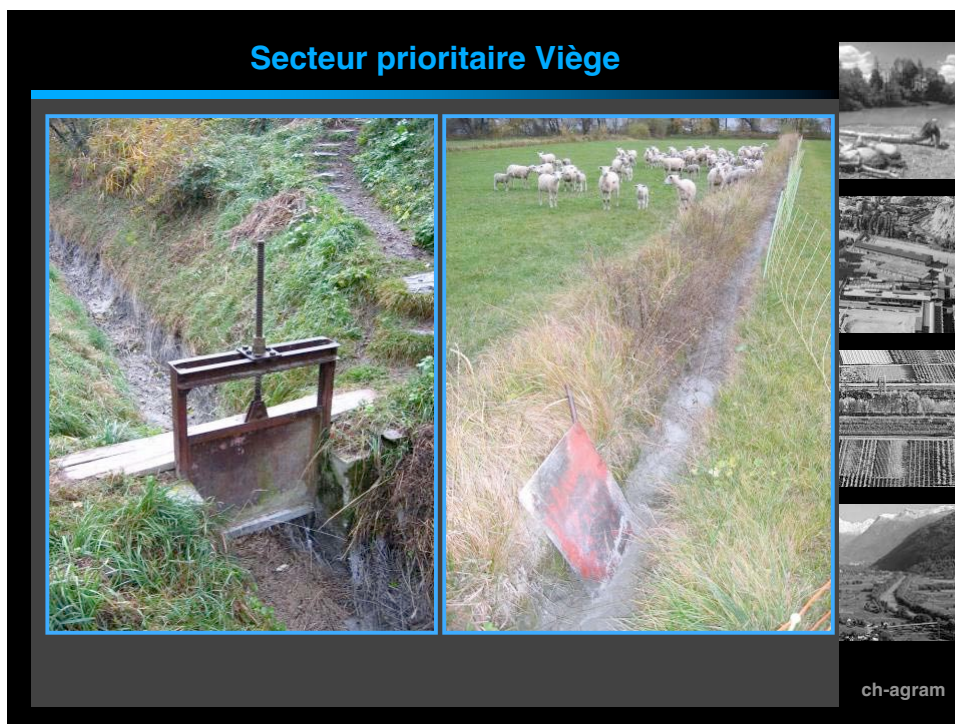
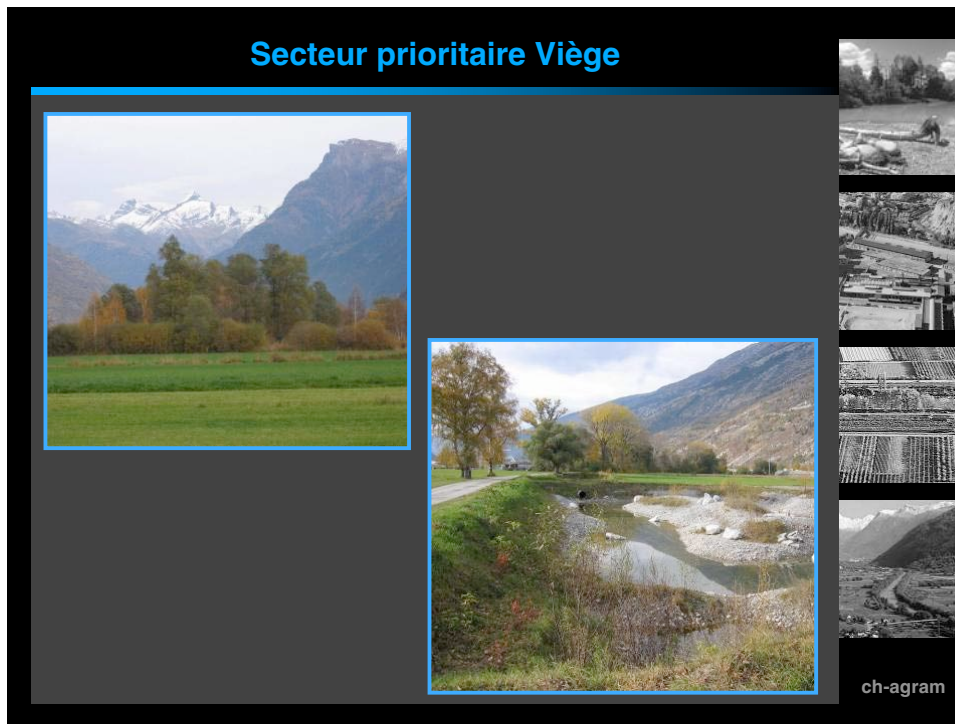










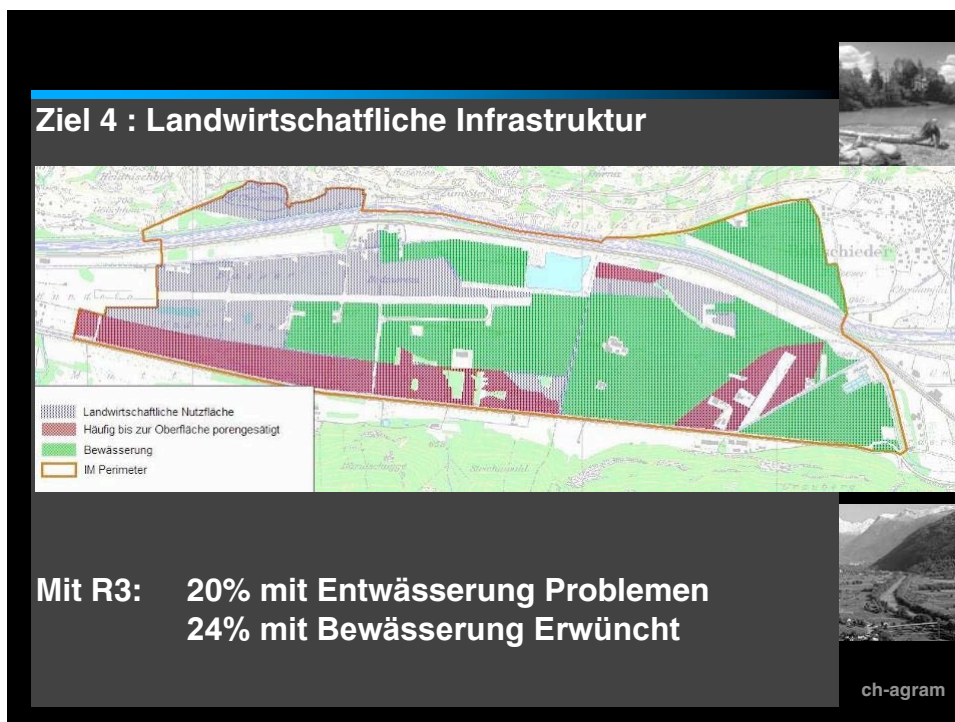
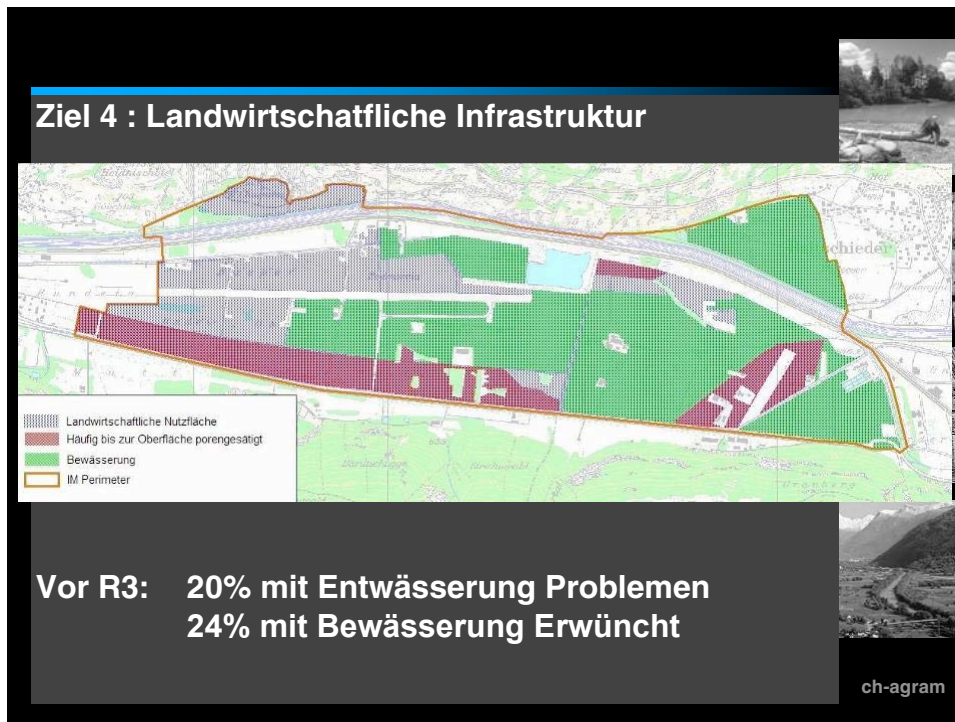


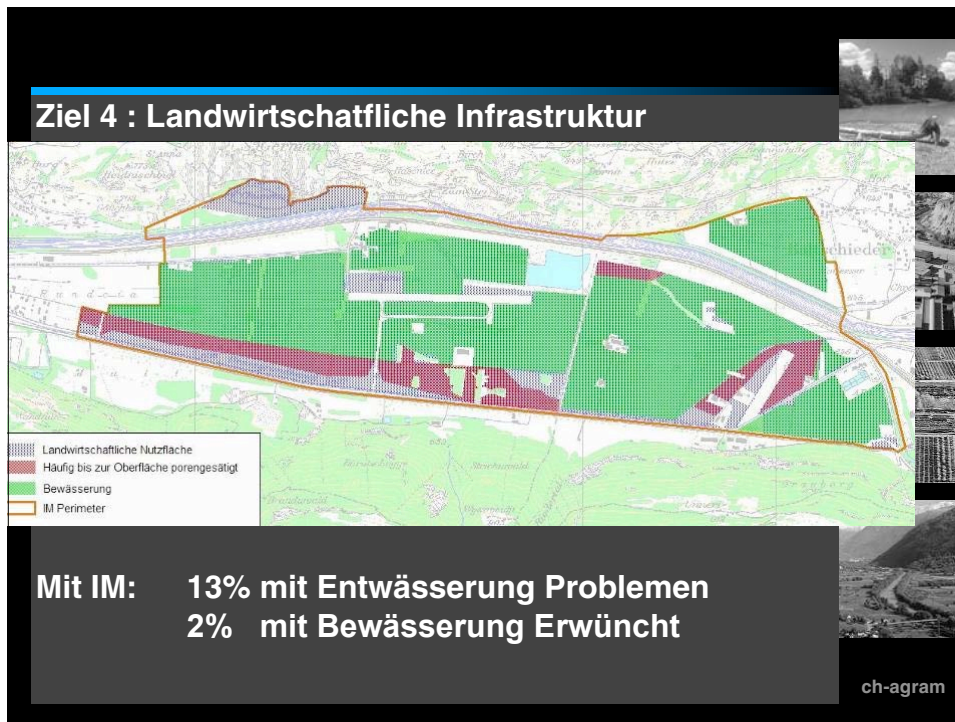
### Secteur prioritaire Viège

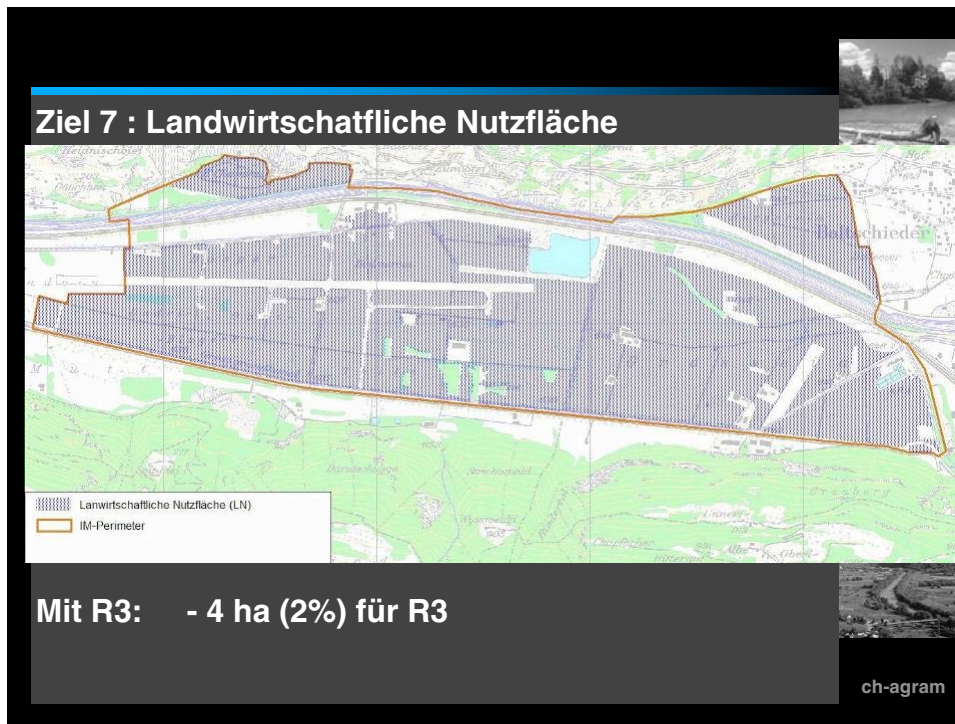
ch-agram

### Concept régional de développement de la plaine

ch-agram

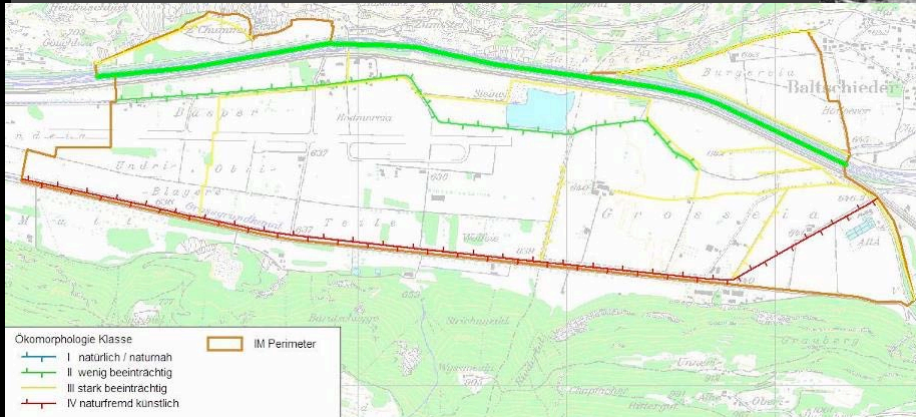








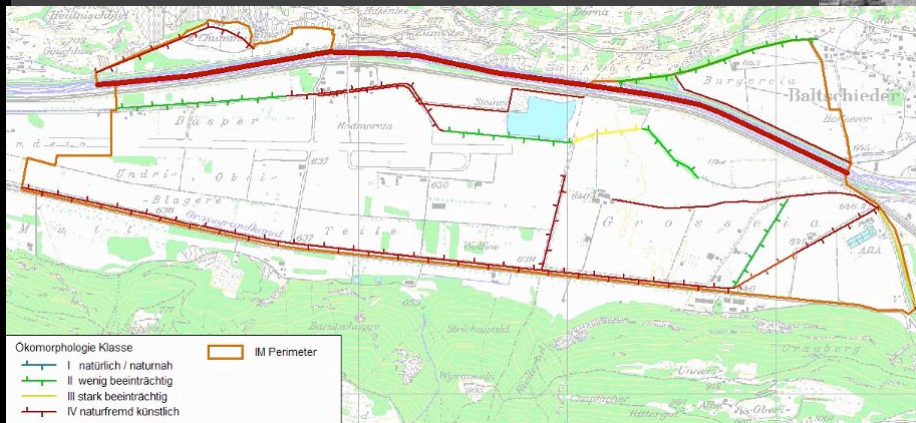
### Ziel 15 : Morphologie der Wasserläufe



Ideale Zustand

ch-agram

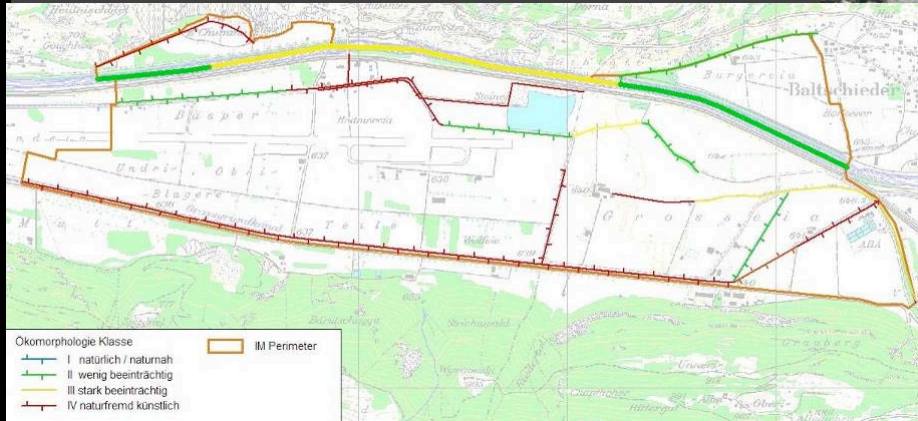
### Ziel 15 : Morphologie der Wasserläufe



Vor R3: 19% des ideale Zustand

ch-agram

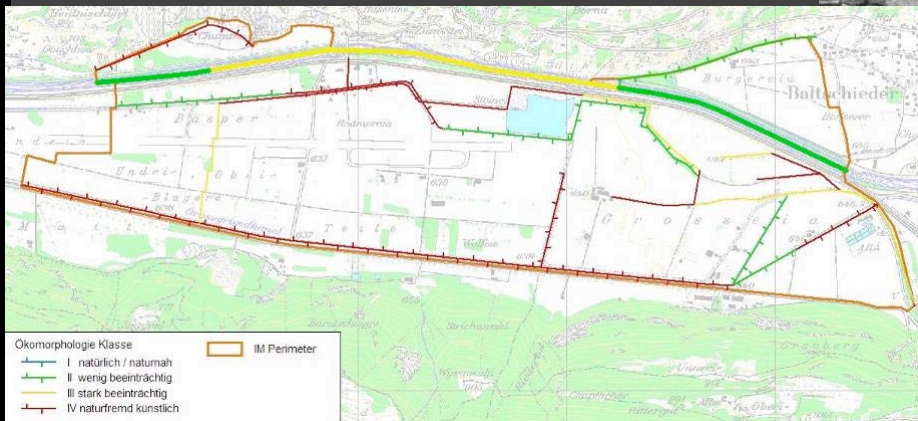
### Ziel 15 : Morphologie der Wasserläufe



Mit R3: 62% des ideale Zustand

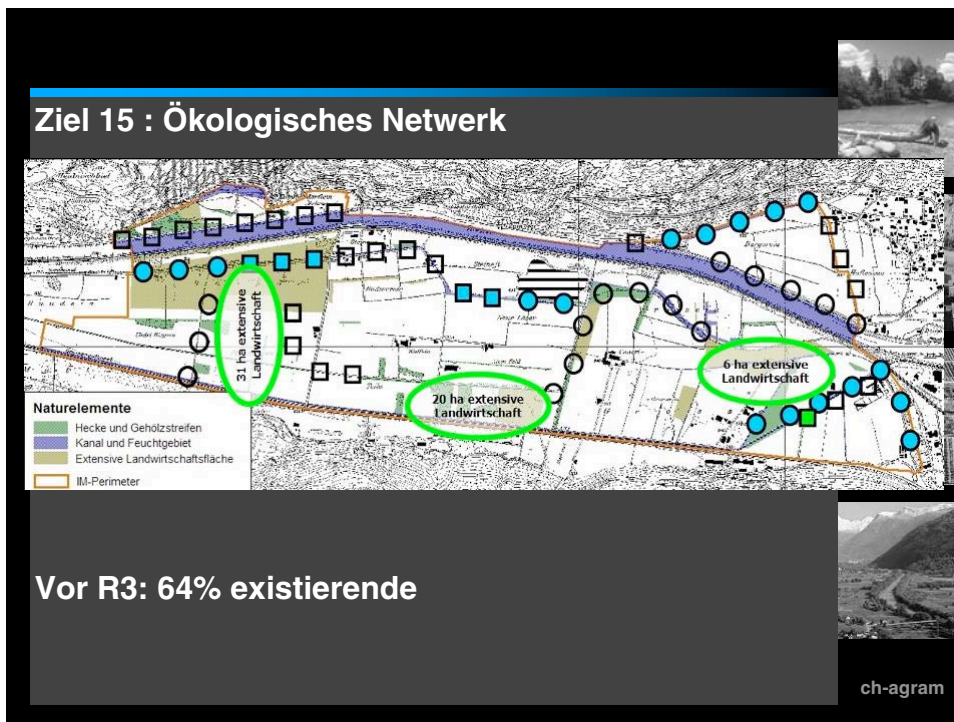
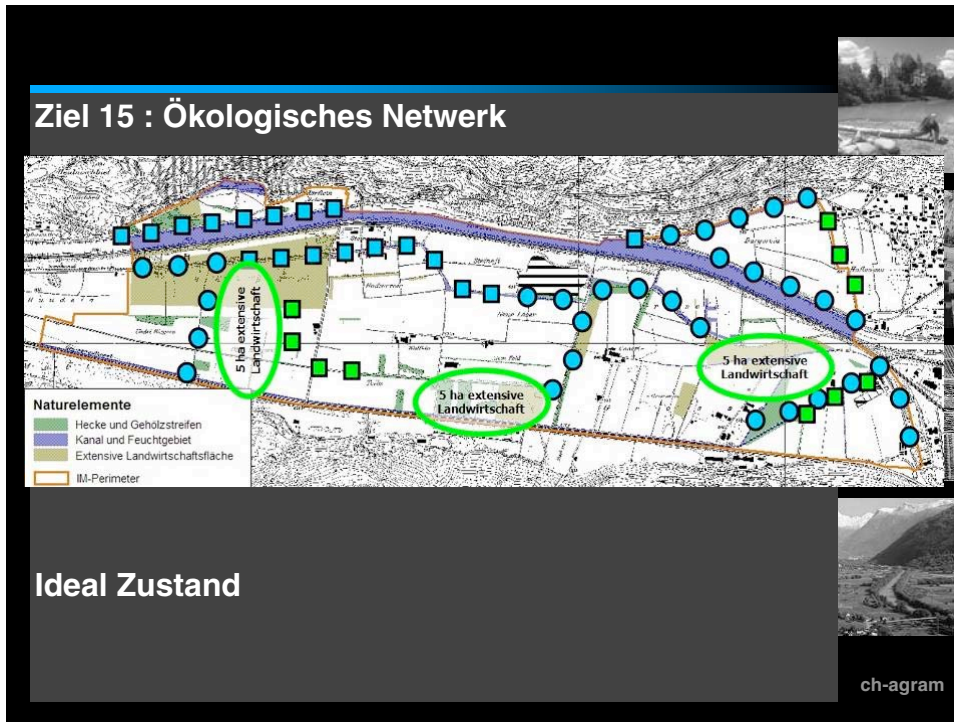
ch-agram

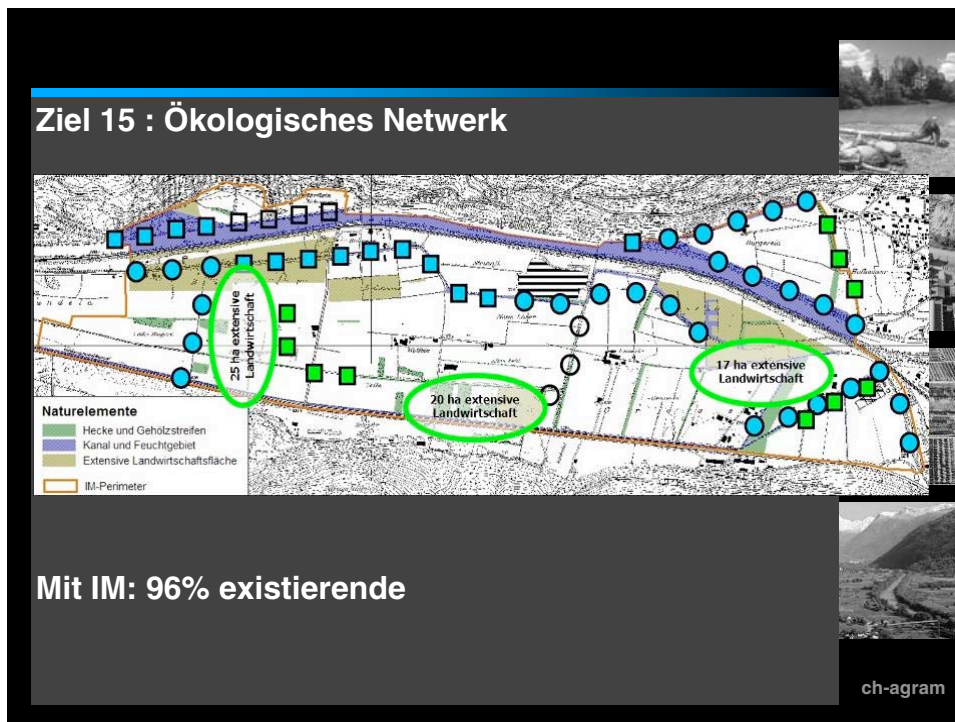
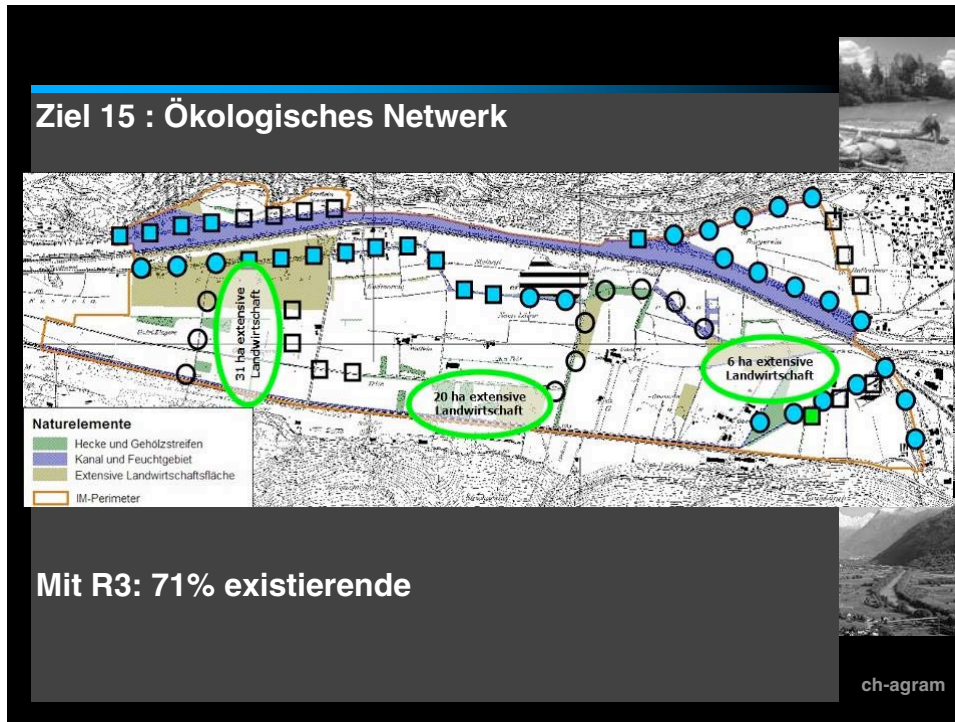
### Ziel 15 : Morphologie der Wasserläufe

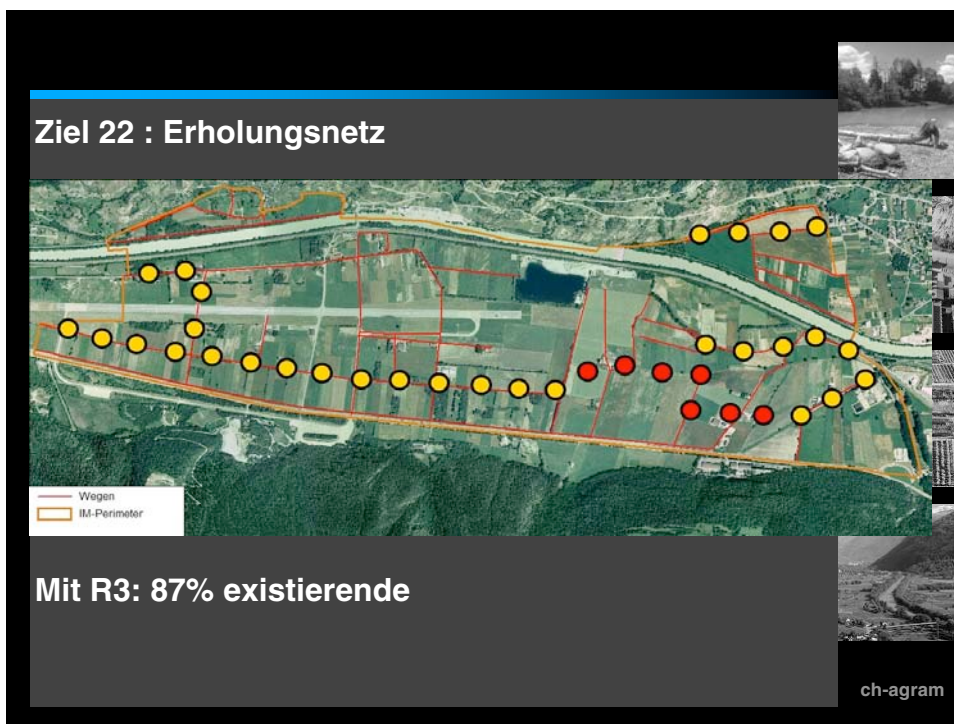
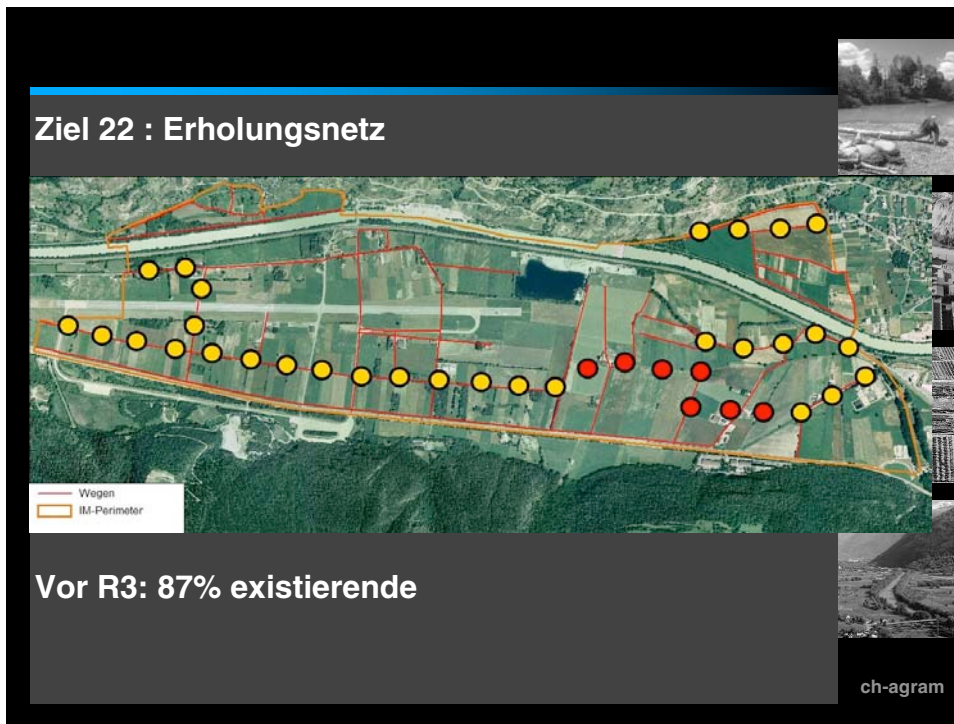


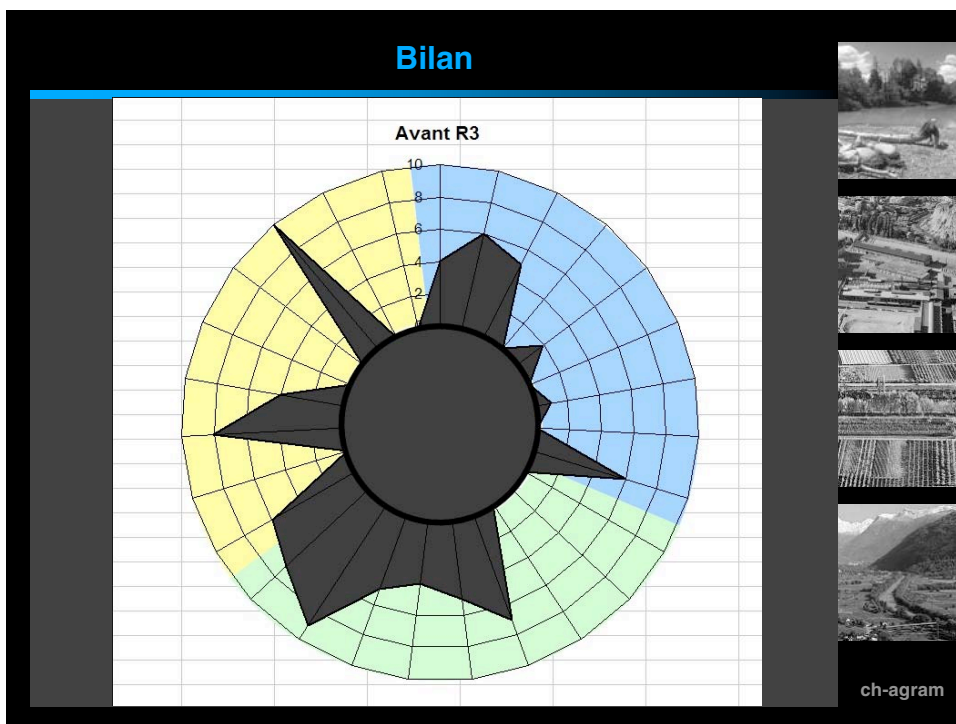
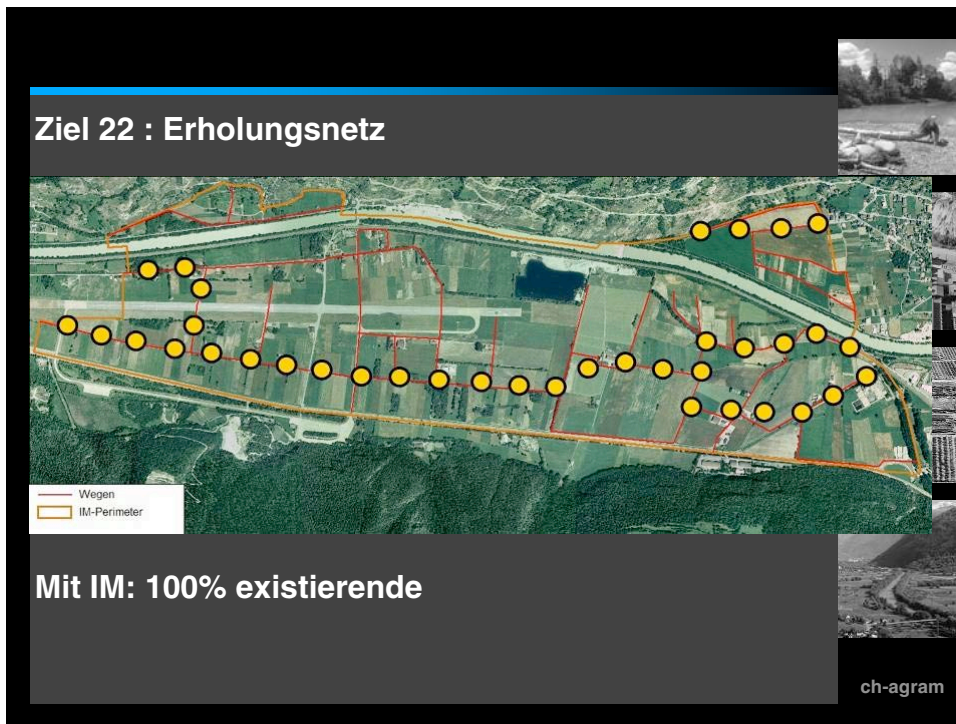
Mit IM: 72% des ideale Zustand

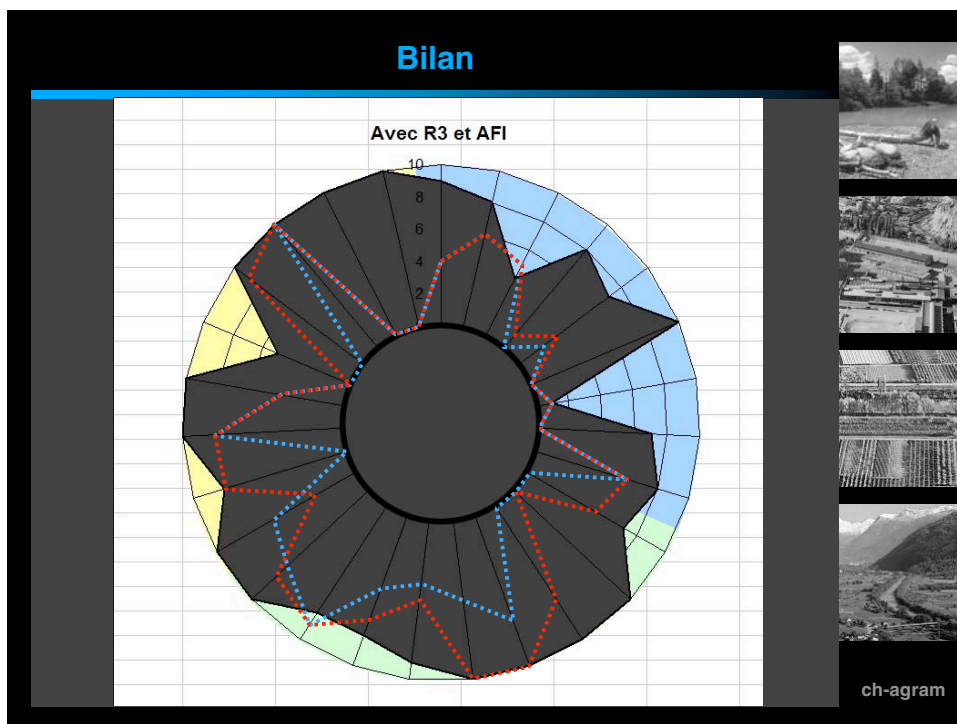
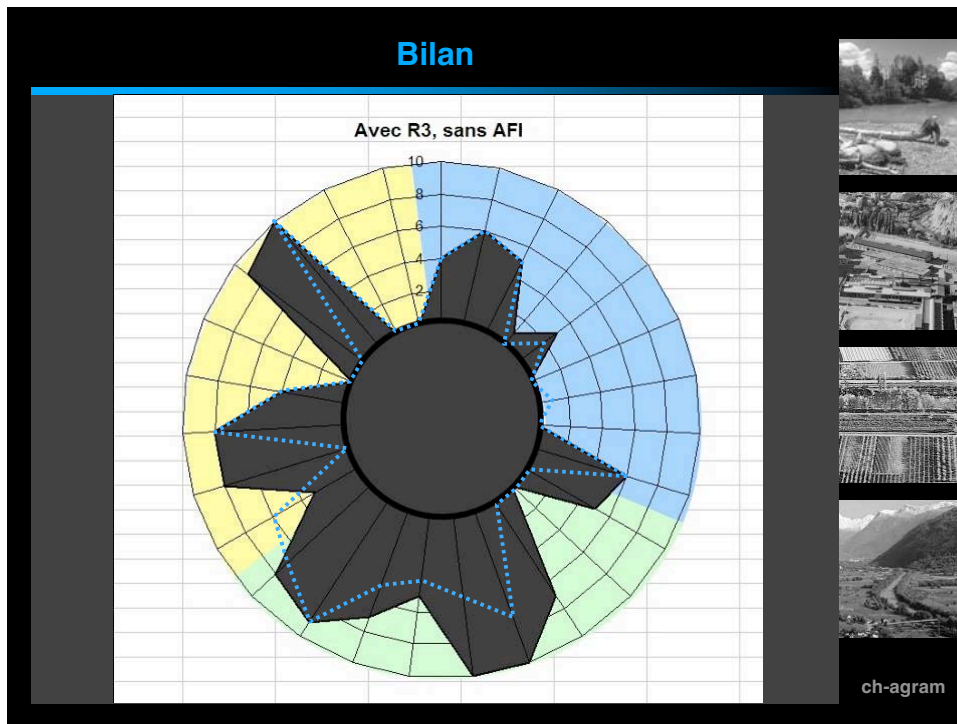
ch-agram









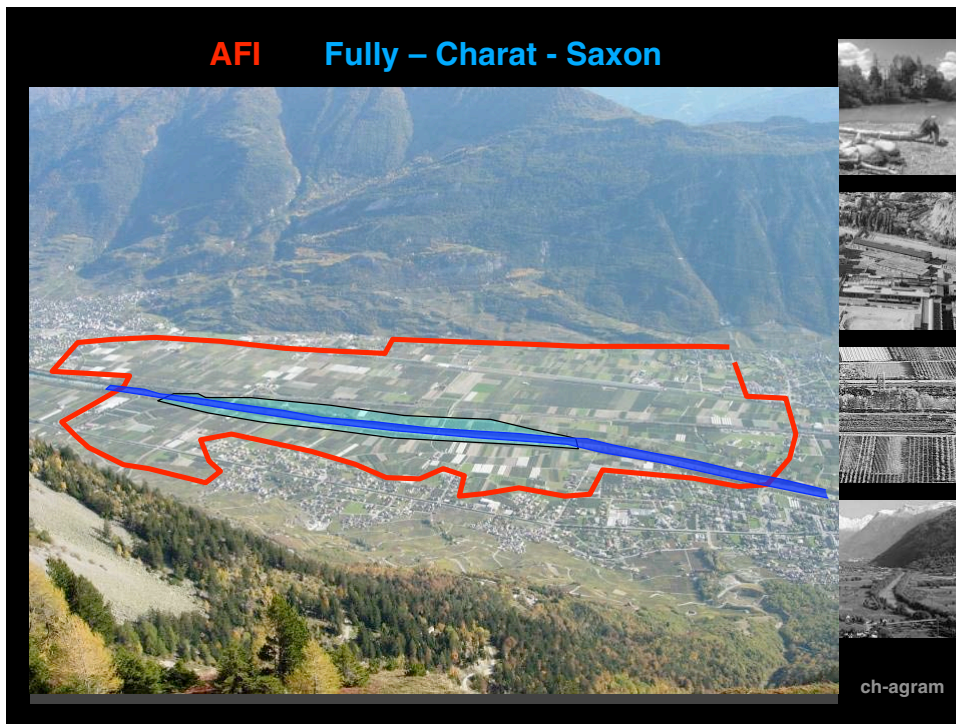


### Amélioration foncière intégrale

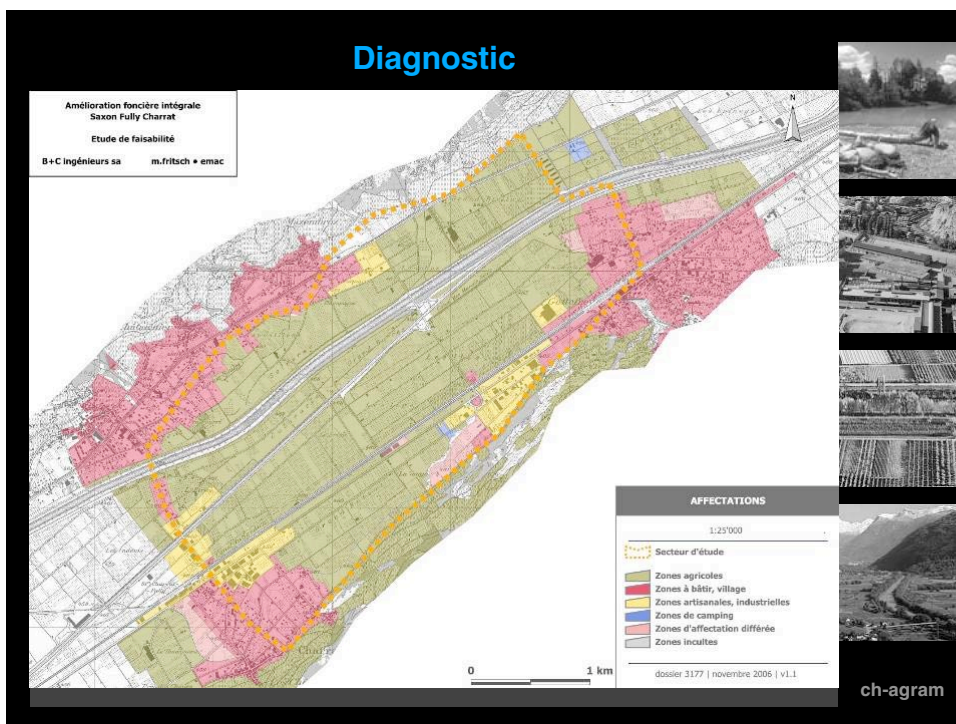
The slide features a collection of images. At the top center is the title "Amélioration foncière intégrale" in red. Below it are two cartoons by M. A. REMIX. The first cartoon shows a person in a red shirt standing on a red square in a field, with another person in a blue shirt and a third person in a pink shirt near a river. The second cartoon shows two people in a field with trees; a speech bubble from the person in the blue shirt says "LA TROISIÈME CORRECTION A PORTÉ SES FRUITS!". To the right of the cartoons is a vertical strip of five black and white photographs showing different agricultural and landscape scenes. At the bottom right of the slide is the text "ch-agram".

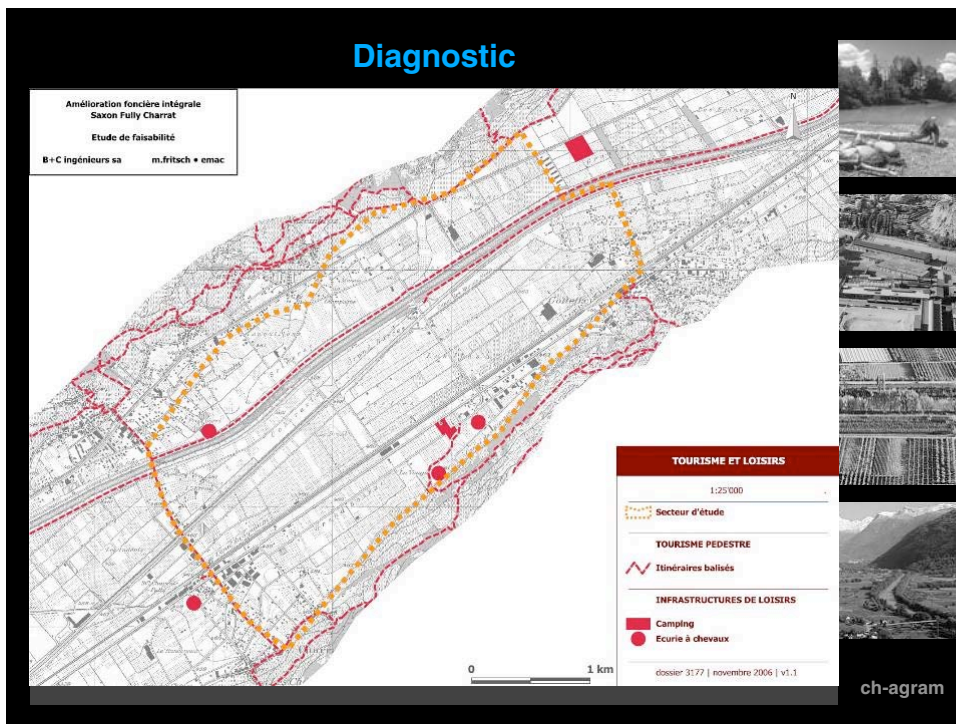
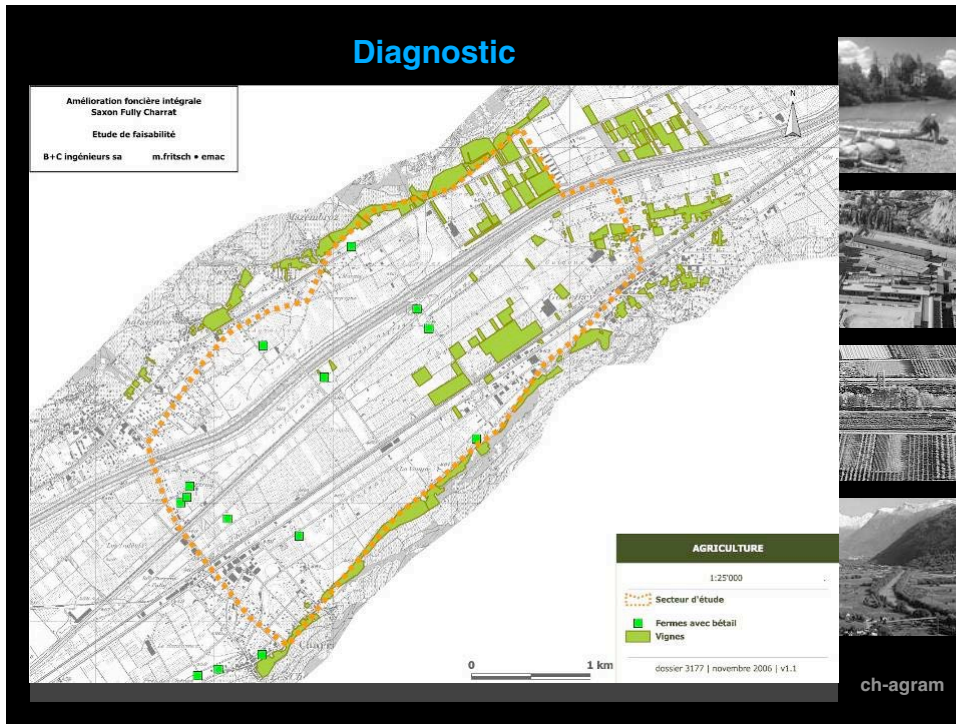
This slide features a large dark grey rectangle on the left side, which is mostly empty. To the right of this rectangle is a vertical strip of five black and white photographs, identical to the ones in the slide above. At the bottom right of the slide is the text "ch-agram".

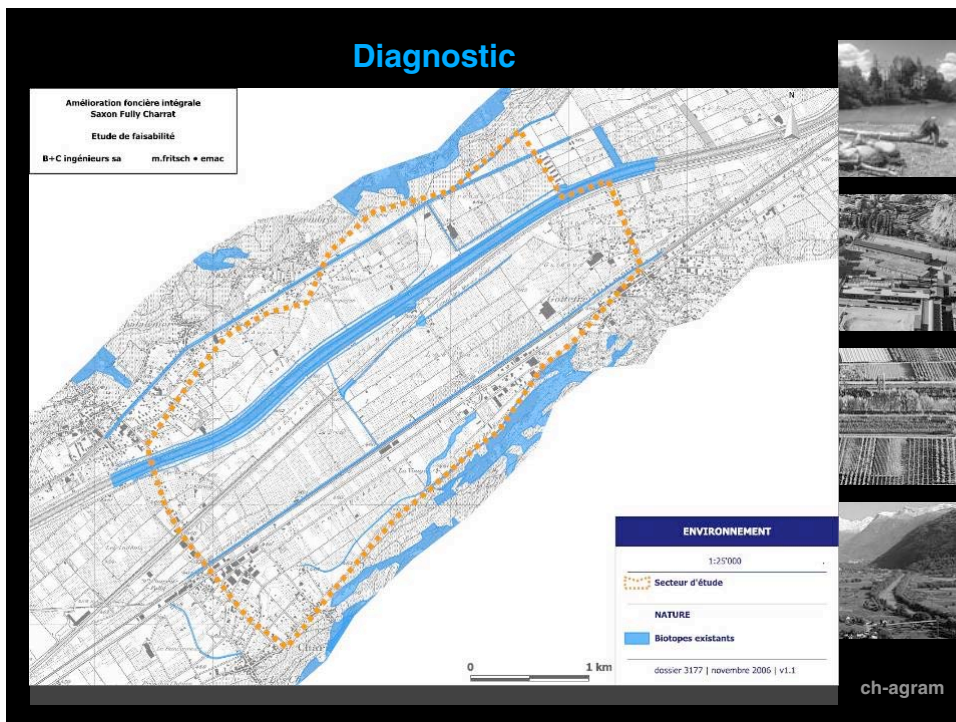
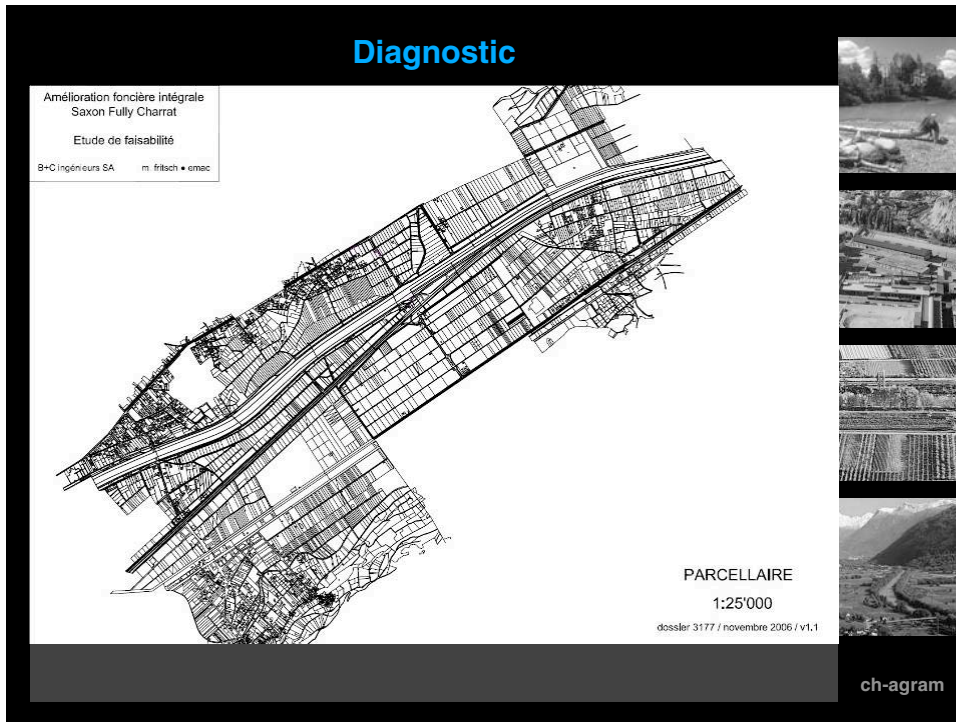


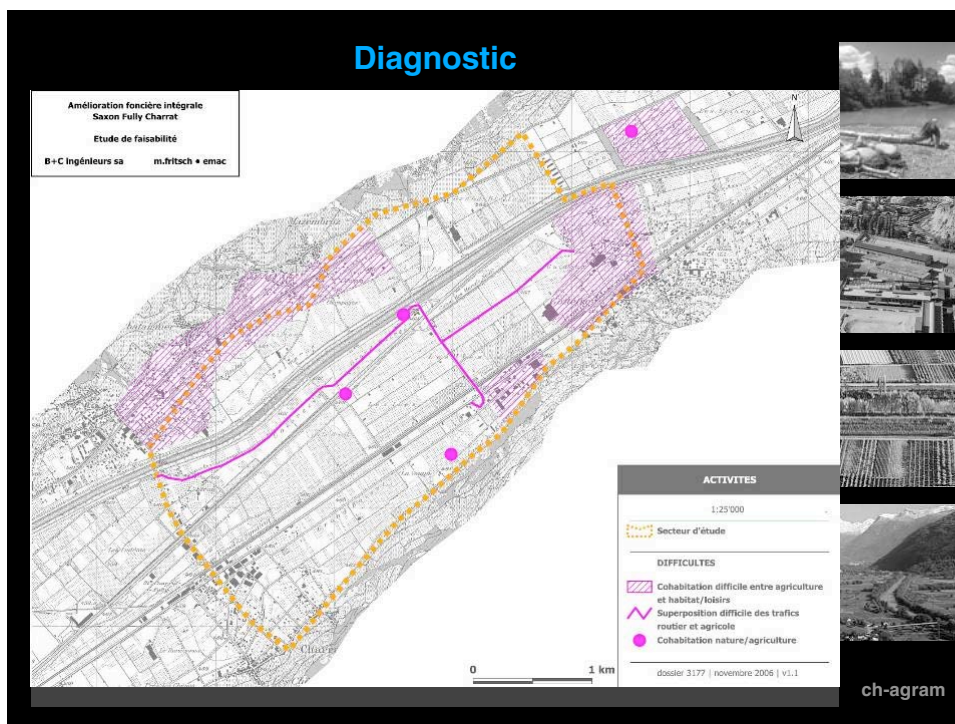
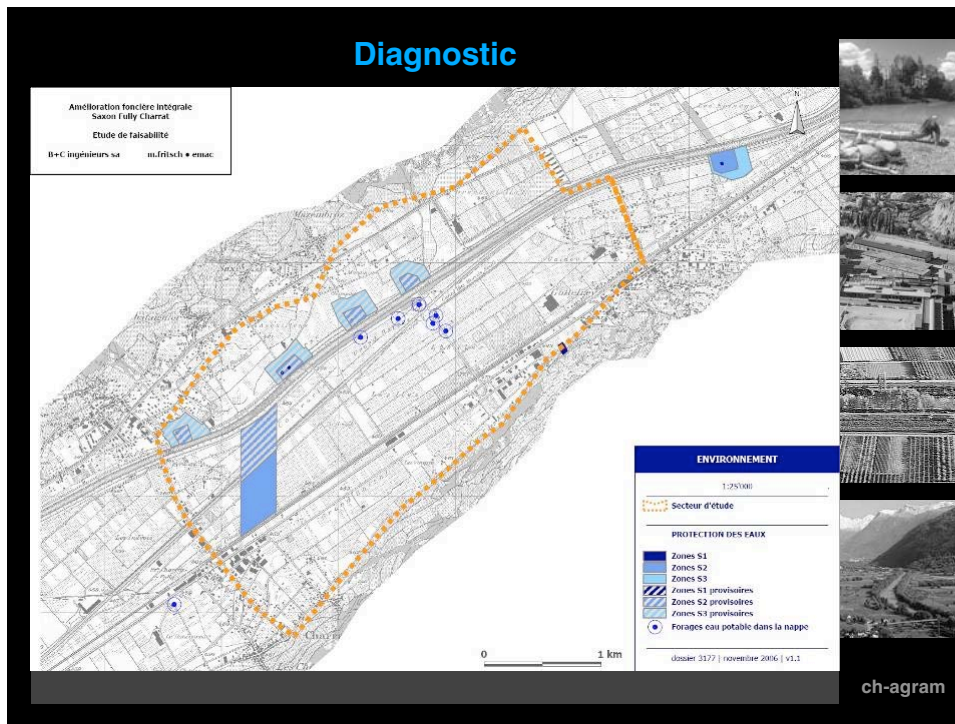


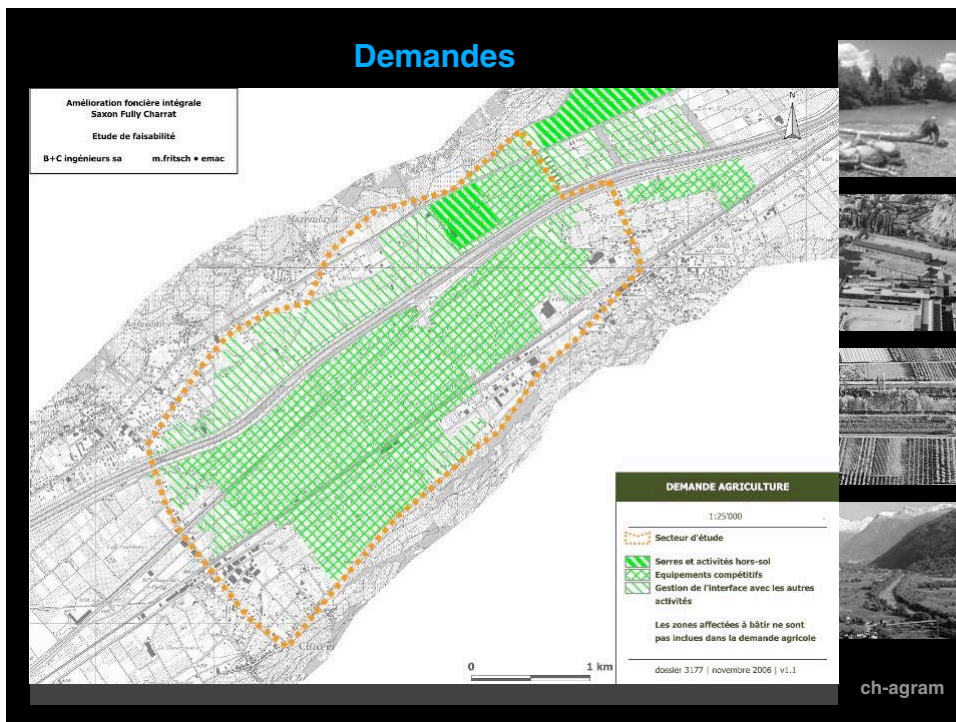
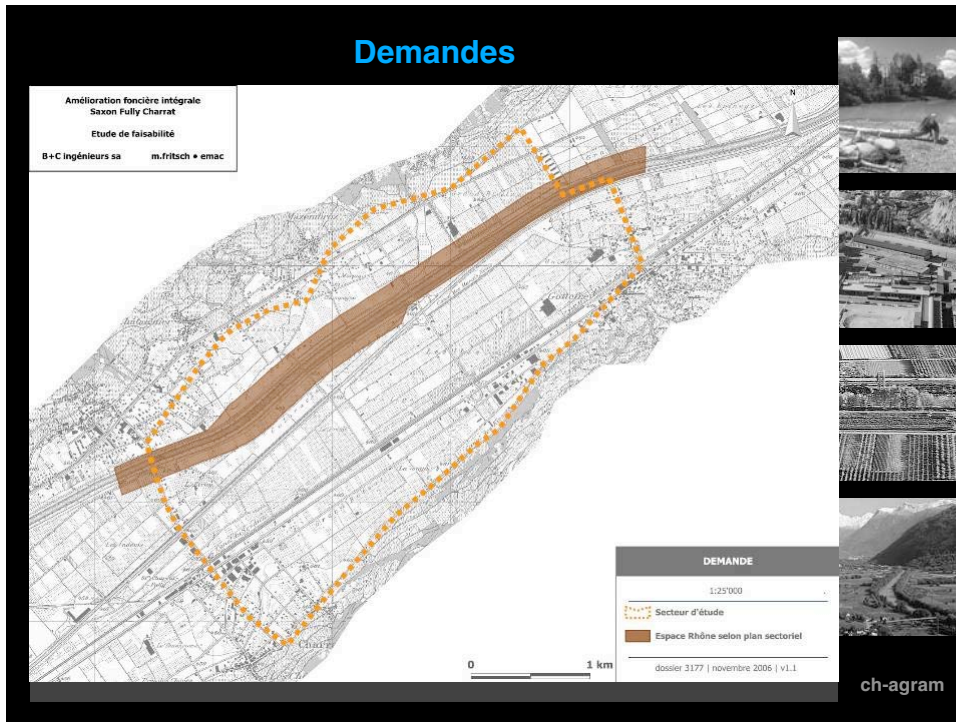


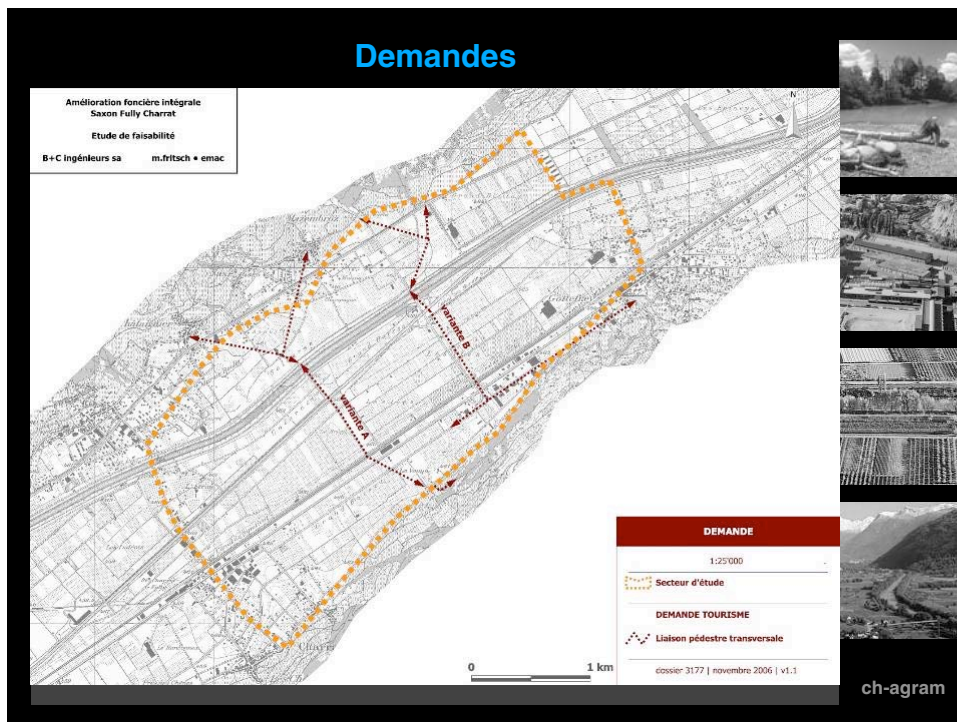
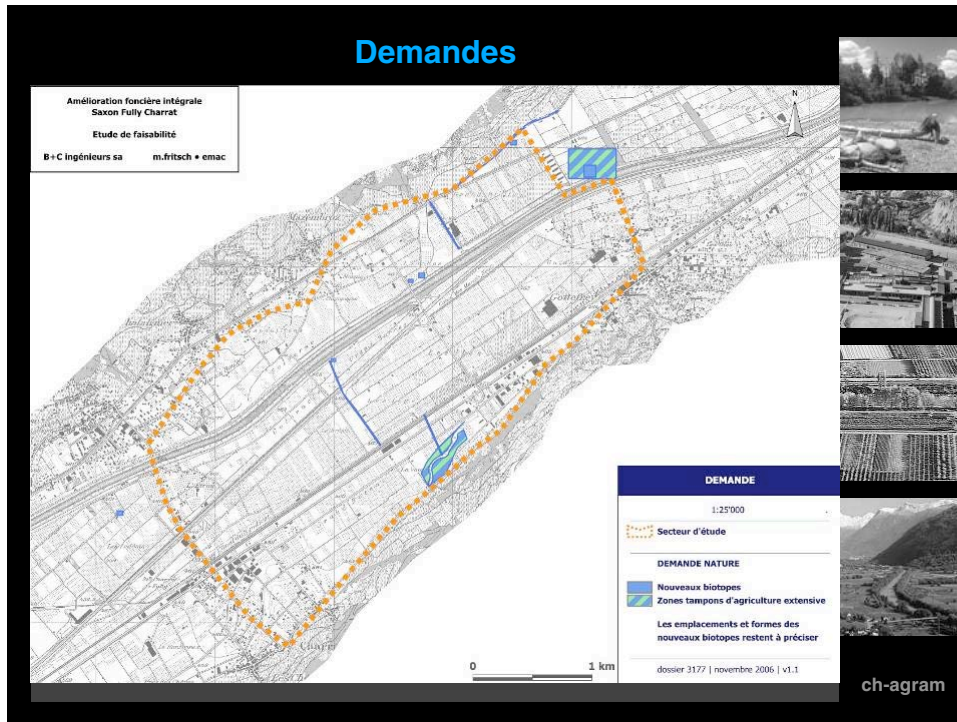




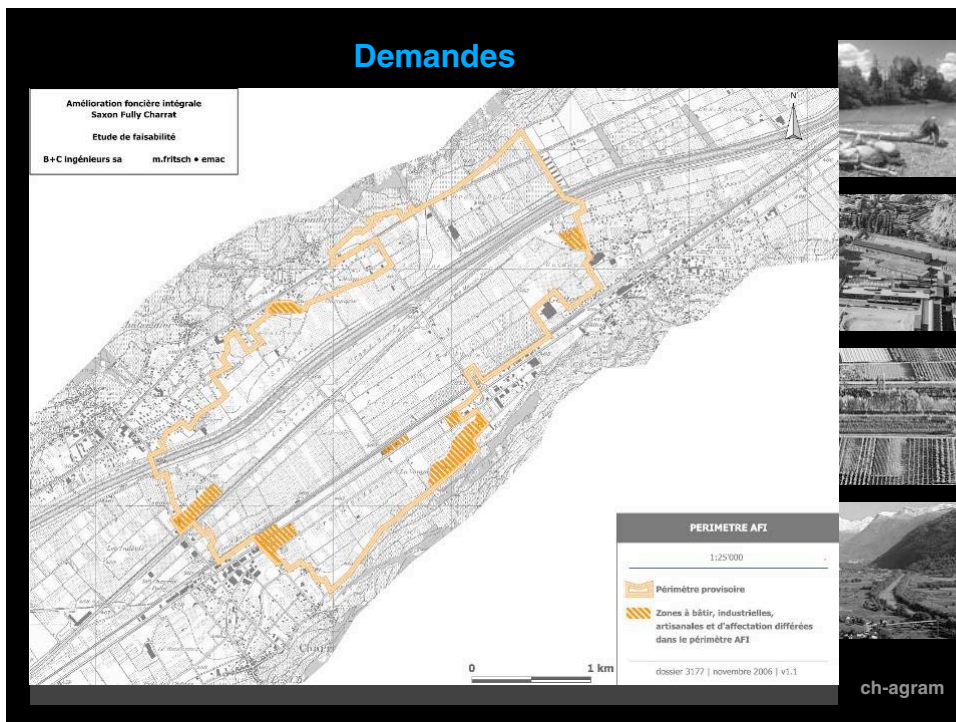
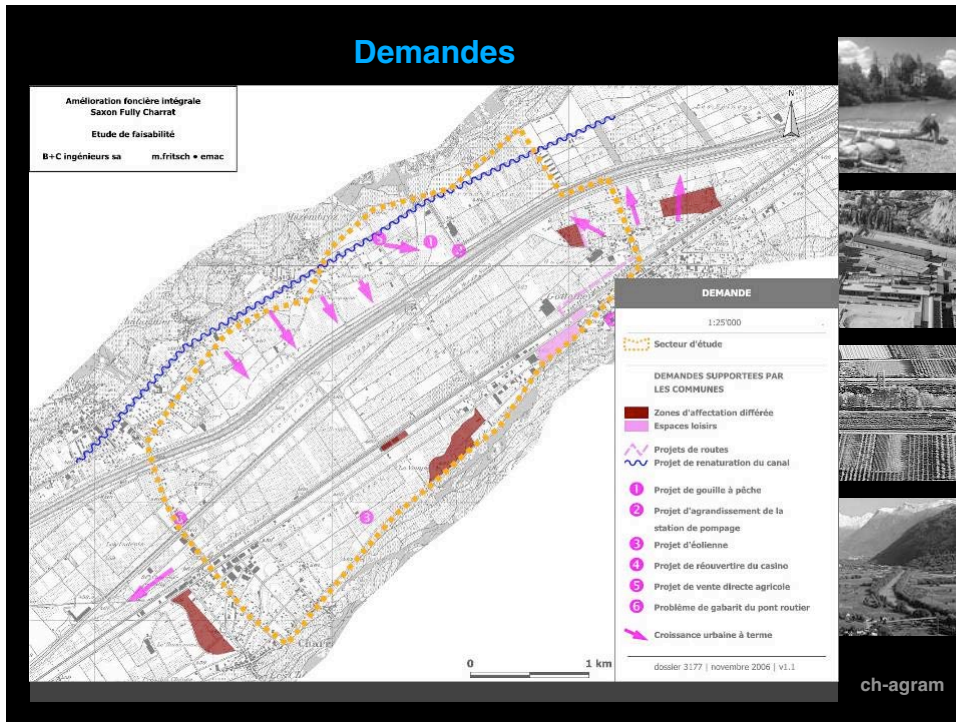


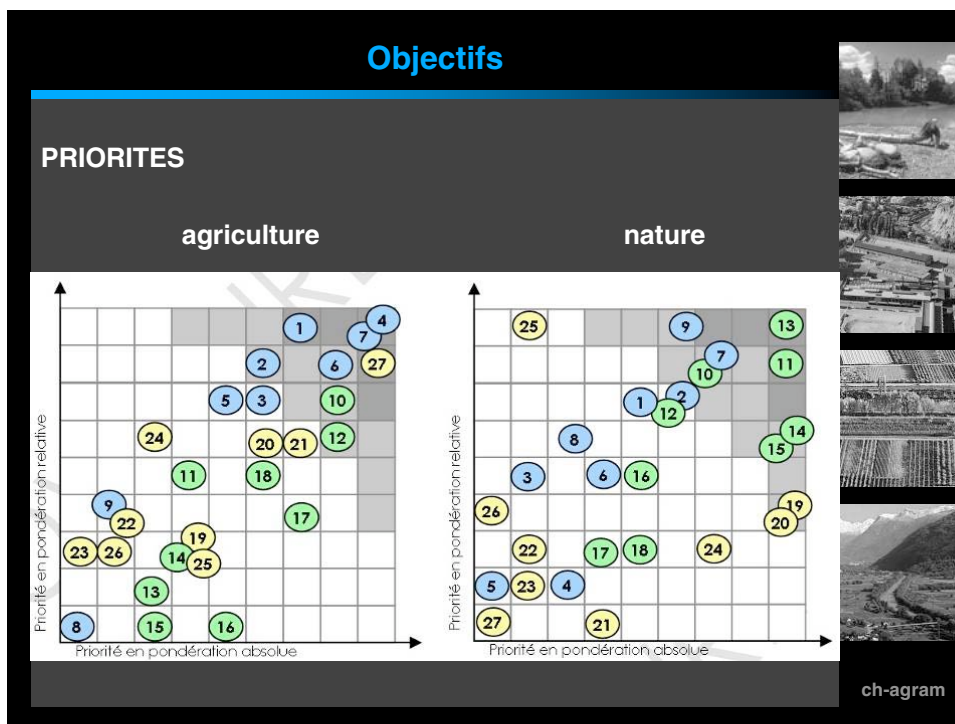
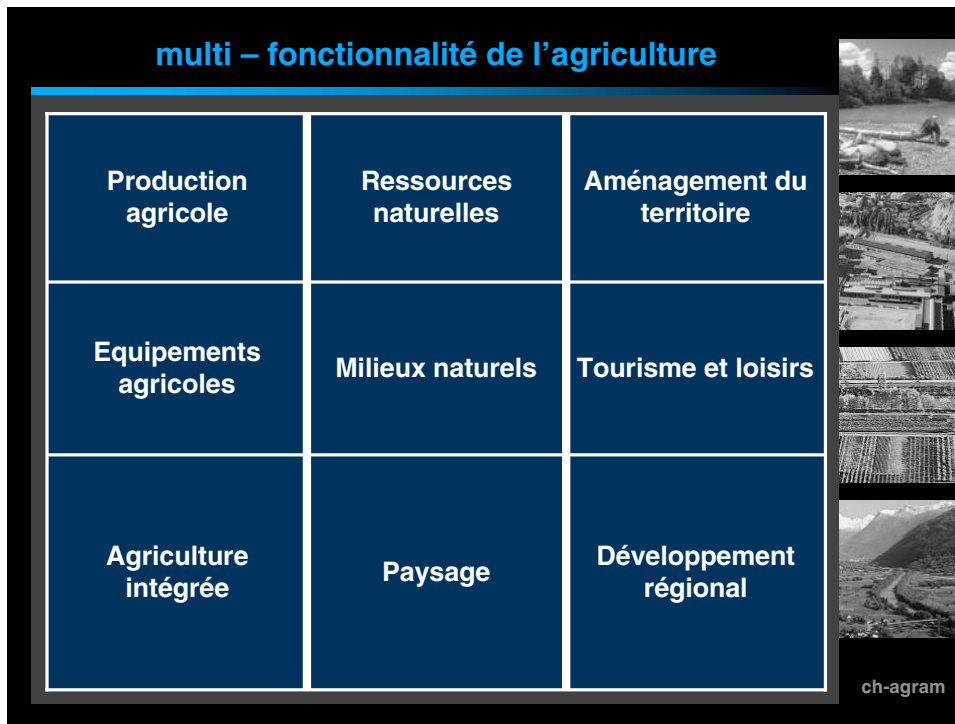













## Objectifs

**OBJECTIFS PRIORITAIRES**

- Irrigation et drainage
- Foncier
- Surface agricole
- Eaux souterraines
- Réseau écologique
- Ecodynamisme
- Dangers naturels

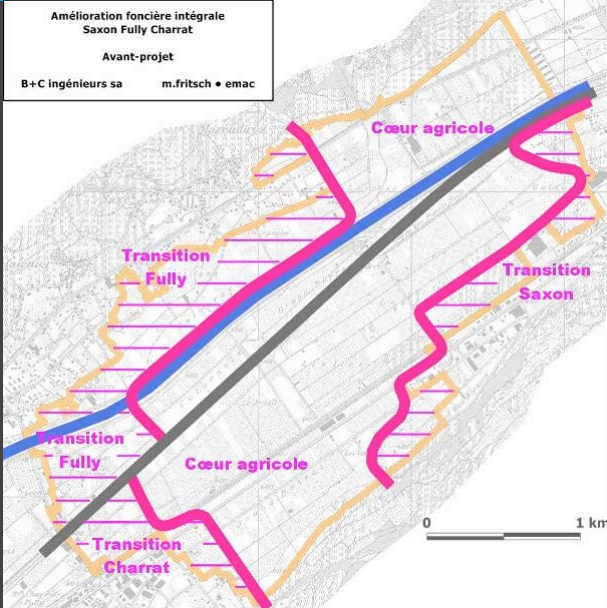


ch-agram

## Concept

**CONCEPT**

Amélioration foncière intégrale  
Saxon Fully Charrat  
Avant-projet  
B+C ingénieurs sa    m.fritsch • emac




ch-agram

## Projet

**MESURES**

- Mobilité**
- Chemins agricoles
- Canaux et zones inondables**
- Irrigation et drainage
- Zones agricoles spéciales
- Remaniement parcellaire
- Zone agricole tampon**
- Suppression zone d'affectation différée**
- Modification de digue et remblais**
- Aménagement du territoire**
- Liaisons pédestres et loisirs**




ch-agram

## Projet

### Irrigation et drainage


AFI Saxon Fully Chartrat  
EMAC & B+C



Indicateur 04  
1:50000  
Irrigation affectée  
Canaux affectés de la région  
Révisé 2017 (septembre 2007) v4.1

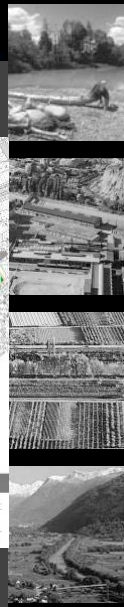
**23%**

AFI Saxon Fully Chartrat  
EMAC & B+C

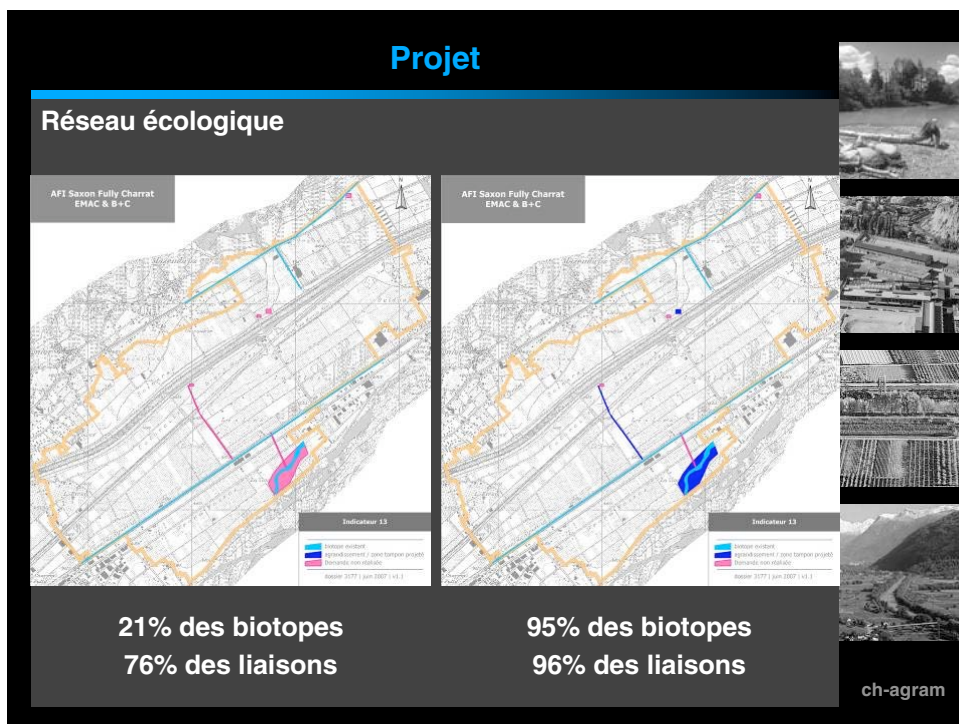
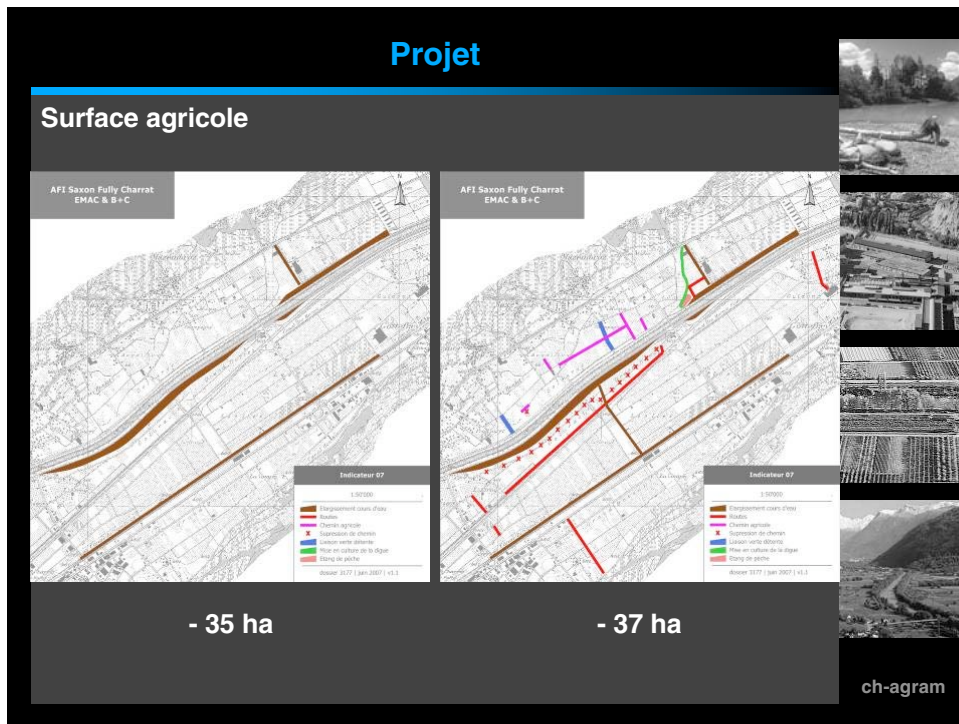


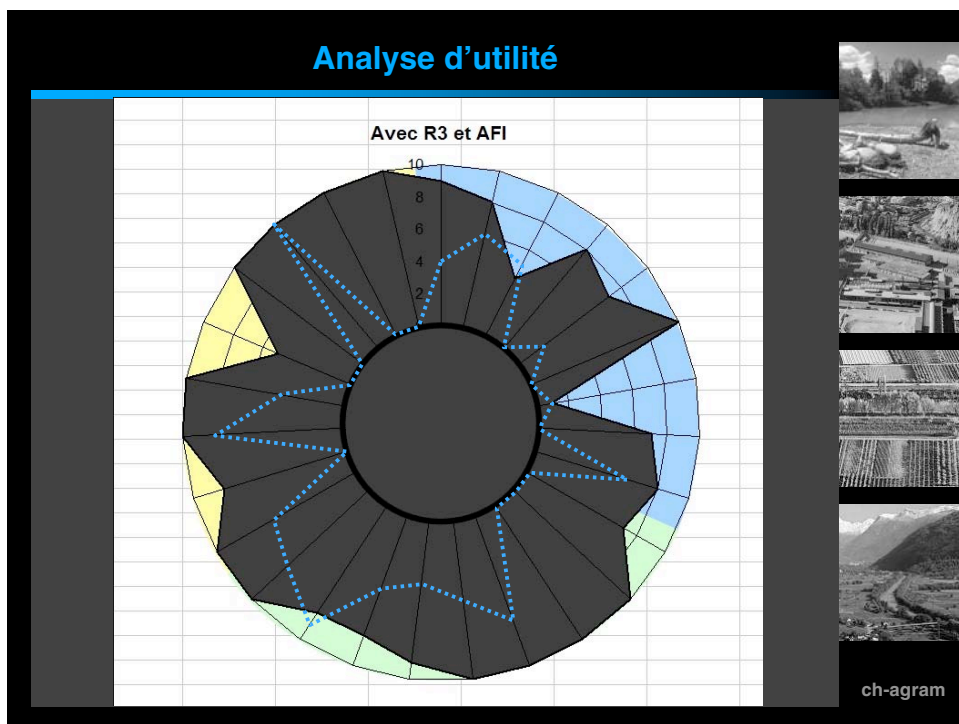
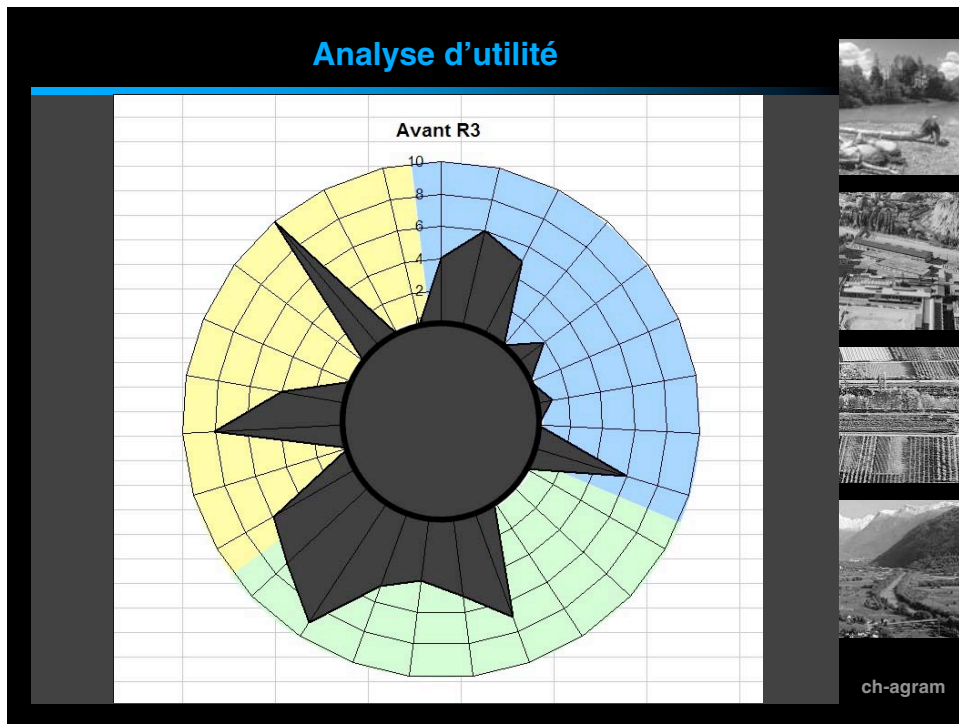
Indicateur 04  
1:50000  
Irrigation affectée  
Canaux affectés de la région  
Révisé 2017 (septembre 2007) v4.1

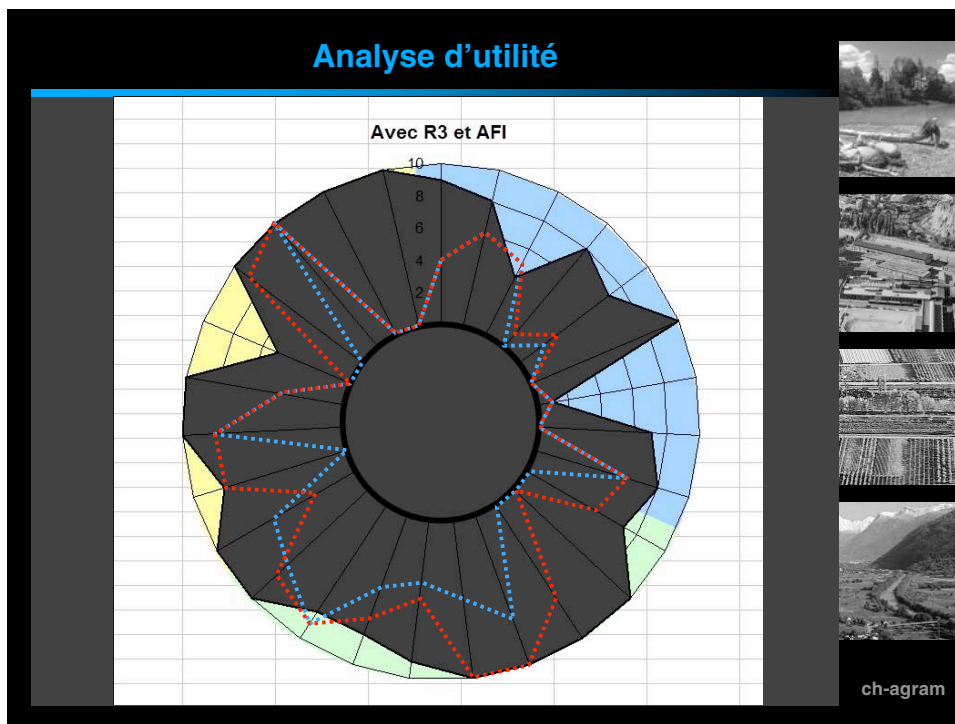
**100%**



ch-agram







### Analyse d'utilité

**ANALYSE D'UTILITE**

évaluation des indicateurs et de leur importance

- avant R3
- avec R3 et sans AFI
- avec R3 et AFI


**REPARTITION DES COÛTS**

ch-agram

## Conclusions


**PROJET TERRITORIAL INTEGRE**

- ⇒ approche consultative / participative
- ⇒ intégration forte grand projet – développement régional
- ⇒ AFI = l’outil pour réorganiser le foncier
- ⇒ indicateurs pour mesurer la performance et la communiquer
- ⇒ indicateurs pour communiquer le projet
- ⇒ analyse d’utilité pour finaliser le projet, montrer la plus-value par groupe d’intérêts et pour proposer une répartition des coûts



ch-agram

## Communication !



ch-agram





**Troisième correction du Rhône**  
SÉCURITÉ POUR LE FUTUR

*Les améliorations foncières intégrales comme  
outils de mise en œuvre de projets territoriaux*

*La 3<sup>ème</sup> correction du Rhône*


*C.-A. Vuillerat*

*CH-AGRAM contribution to IRL 13.09.07*

*Swiss National Commission on agro systems and land improvement*



ch-agram



ch-agram